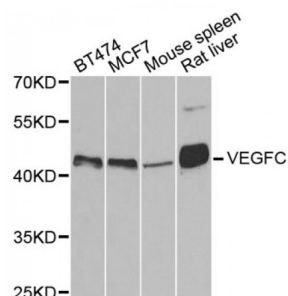


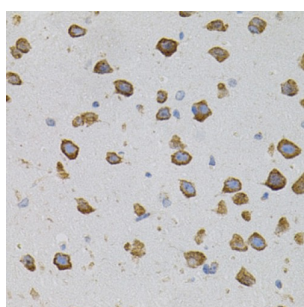
Abbexa Ltd, Innovation Centre, Cambridge Science Park, Cambridge, CB4 0EY, UK
Telephone: +44 (0) 1223 755950 - Fax: +44 (0) 1223 755951 - E-Mail: info@abbexa.com

Vascular Endothelial Growth Factor C (VEGFC) Antibody

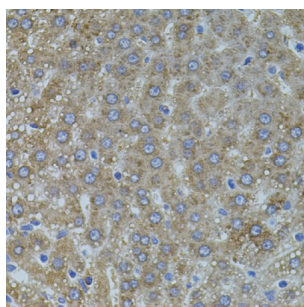
Catalogue No.: abx001993



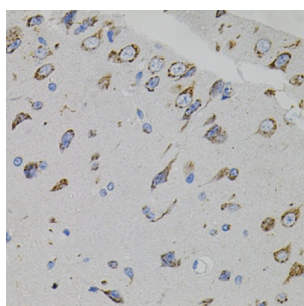
Western blot analysis of extracts of various cell lines, using VEGFC antibody (abx001993) at 1/500 dilution.



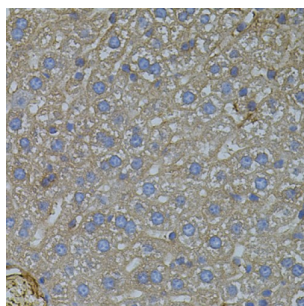
Immunohistochemistry of paraffin-embedded mouse brain using VEGFC antibody (abx001993) (40x lens).



Immunohistochemistry of paraffin-embedded rat liver using VEGFC antibody (abx001993) (40x lens).



Immunohistochemistry of paraffin-embedded rat brain using VEGFC antibody (abx001993) (40x lens).



Immunohistochemistry of paraffin-embedded mouse liver using VEGFC antibody (abx001993) (40x lens).

VEGFC Antibody is a Rabbit Polyclonal antibody against VEGFC. The protein encoded by this gene is a member of the platelet-

Abbexa Ltd, Innovation Centre, Cambridge Science Park, Cambridge, CB4 0EY, UK
Telephone: +44 (0) 1223 755950 - Fax: +44 (0) 1223 755951 - E-Mail: info@abbexa.com

derived growth factor/vascular endothelial growth factor (PDGF/VEGF) family, is active in angiogenesis and endothelial cell growth, and can also affect the permeability of blood vessels. This secreted protein undergoes a complex proteolytic maturation, generating multiple processed forms which bind and activate VEGFR-3 receptors. Only the fully processed form can bind and activate VEGFR-2 receptors. This protein is structurally and functionally similar to vascular endothelial growth factor D.

Target: VEGFC

Reactivity: Human, Mouse, Rat

Host: Rabbit

Clonality: Polyclonal

Tested Applications: WB, IHC

Recommended dilutions: WB: 1/500 - 1/2000, IHC: 1/100 - 1/200. Optimal dilutions/concentrations should be determined by the end user.

Immunogen: Recombinant protein of human VEGFC.

Purification: Affinity purified.

Form: Liquid

Isotype: IgG

Conjugation: Unconjugated

Storage: Aliquot and store at -20 °C. Avoid repeated freeze/thaw cycles.

Molecular Weight: Calculated MW: 46 kDa
Observed MW: 43 kDa

Swiss Prot: [P49767](#)

GeneID: [7424](#)

Gene Symbol: VEGFC

Concentration: > 1 mg/ml

Buffer: PBS, pH 7.3, 0.02% sodium azide, 50% glycerol.

Note: This product is for research use only.