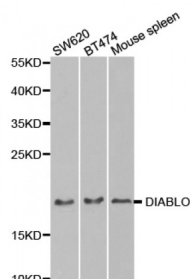


Abbexa Ltd, Innovation Centre, Cambridge Science Park, Cambridge, CB4 0EY, UK
Telephone: +44 (0) 1223 755950 - Fax: +44 (0) 1223 755951 - E-Mail: info@abbexa.com

Second Mitochondria-Derived Activator of Caspase / SMAC (DIABLO) Antibody

Catalogue No.: abx002001



Western blot analysis of extracts of various cell lines, using DIABLO antibody (abx002001) at 1/1000 dilution.

DIABLO Antibody is a Rabbit Polyclonal antibody against DIABLO. This gene encodes an inhibitor of apoptosis protein (IAP)-binding protein. The encoded mitochondrial protein enters the cytosol when cells undergo apoptosis, and allows activation of caspases by binding to inhibitor of apoptosis proteins. Overexpression of the encoded protein sensitizes tumor cells to apoptosis. A mutation in this gene is associated with young-adult onset of nonsyndromic deafness-64. Alternative splicing results in multiple transcript variants encoding different isoforms.

Target: DIABLO

Reactivity: Human, Mouse

Host: Rabbit

Clonality: Polyclonal

Tested Applications: WB

Recommended dilutions: WB: 1/500 - 1/2000. Optimal dilutions/concentrations should be determined by the end user.

Immunogen: Recombinant protein of human DIABLO.

Purification: Affinity purified.

Form: Liquid

Isotype: IgG

Conjugation: Unconjugated

Storage: Aliquot and store at -20 °C. Avoid repeated freeze/thaw cycles.

Molecular Weight: Calculated MW: 21 kDa/22 kDa/27 kDa
Observed MW: 18 kDa

Swiss Prot: [Q9NR28](#)

GeneID: [56616](#)

Gene Symbol: DIABLO

Concentration: > 1 mg/ml

Buffer: PBS, pH 7.3, 0.02% sodium azide, 50% glycerol.

Note: This product is for research use only.