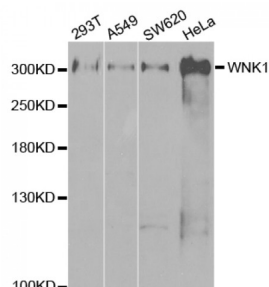


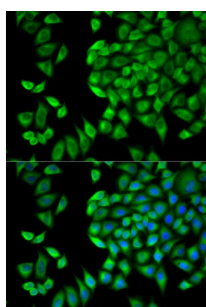
Abbexa Ltd, Innovation Centre, Cambridge Science Park, Cambridge, CB4 0EY, UK
Telephone: +44 (0) 1223 755950 - Fax: +44 (0) 1223 755951 - E-Mail: info@abbexa.com

WNK Lysine Deficient Protein Kinase 1 (WNK1) Antibody

Catalogue No.: abx002006



Western blot analysis of extracts of various cell lines, using WNK1 antibody (abx002006) at 1/1000 dilution.



Immunofluorescence analysis of HeLa cells using WNK1 antibody (abx002006). Blue: DAPI for nuclear staining.

WNK1 Antibody is a Rabbit Polyclonal antibody against WNK1. This gene encodes a member of the WNK subfamily of serine/threonine protein kinases. The encoded protein may be a key regulator of blood pressure by controlling the transport of sodium and chloride ions. Mutations in this gene have been associated with pseudohypoaldosteronism type II and hereditary sensory neuropathy type II. Alternatively spliced transcript variants encoding different isoforms have been described but the full-length nature of all of them has yet to be determined.

Target: WNK1

Reactivity: Human, Mouse

Host: Rabbit

Clonality: Polyclonal

Tested Applications: WB, IF/ICC

Recommended dilutions: WB: 1/500 - 1/2000, IF/ICC: 1/50 - 1/200. Optimal dilutions/concentrations should be determined by the end user.

Immunogen: Recombinant protein of human WNK1.

Purification: Affinity purified.

Form: Liquid

Abbexa Ltd, Innovation Centre, Cambridge Science Park, Cambridge, CB4 0EY, UK
Telephone: +44 (0) 1223 755950 - Fax: +44 (0) 1223 755951 - E-Mail: info@abbexa.com

Isotype:	IgG
Conjugation:	Unconjugated
Storage:	Aliquot and store at -20 °C. Avoid repeated freeze/thaw cycles.
Molecular Weight:	Calculated MW: 206 kDa/225 kDa/250 kDa/279 kDa/299 kDa Observed MW: 300 kDa
Swiss Prot:	Q9H4A3
GeneID:	65125
Gene Symbol:	WNK1
Concentration:	> 1 mg/ml
Buffer:	PBS, pH 7.3, 0.02% sodium azide, 50% glycerol.
Note:	This product is for research use only.