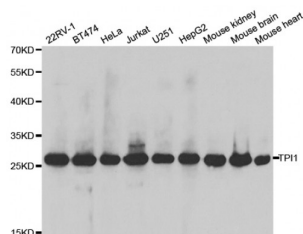


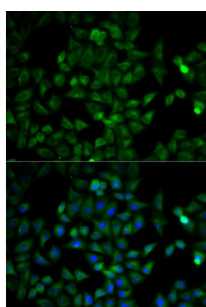
Abbexa Ltd, Innovation Centre, Cambridge Science Park, Cambridge, CB4 0EY, UK
Telephone: +44 (0) 1223 755950 - Fax: +44 (0) 1223 755951 - E-Mail: info@abbexa.com

Triosephosphate Isomerase (TPI1) Antibody

Catalogue No.: abx002016



Western blot analysis of extracts of various cell lines, using TPI1 antibody (abx002016) at 1/1000 dilution.



Immunofluorescence analysis of HeLa cells using TPI1 antibody (abx002016). Blue: DAPI for nuclear staining.

TPI1 Antibody is a Rabbit Polyclonal antibody against TPI1. This gene encodes an enzyme, consisting of two identical proteins, which catalyzes the isomerization of glyceraldehydes 3-phosphate (G3P) and dihydroxy-acetone phosphate (DHAP) in glycolysis and gluconeogenesis. Mutations in this gene are associated with triosephosphate isomerase deficiency. Pseudogenes have been identified on chromosomes 1, 4, 6 and 7. Alternative splicing results in multiple transcript variants.

Target:	TPI1
Reactivity:	Human, Mouse
Host:	Rabbit
Clonality:	Polyclonal
Tested Applications:	WB, IHC, IF/ICC
Recommended dilutions:	WB: 1/500 - 1/2000, IHC: 1/50 - 1/200, IF/ICC: 1/50 - 1/200. Optimal dilutions/concentrations should be determined by the end user.
Immunogen:	Recombinant protein of human TPI1.
Purification:	Affinity purified.
Form:	Liquid

Abbexa Ltd, Innovation Centre, Cambridge Science Park, Cambridge, CB4 0EY, UK
Telephone: +44 (0) 1223 755950 - Fax: +44 (0) 1223 755951 - E-Mail: info@abbexa.com

Isotype:	IgG
Conjugation:	Unconjugated
Storage:	Aliquot and store at -20 °C. Avoid repeated freeze/thaw cycles.
Molecular Weight:	Calculated MW: 17 kDa/26 kDa/30 kDa Observed MW: 27 kDa
Swiss Prot:	P60174
GeneID:	7167
Gene Symbol:	TPI1
Concentration:	> 1 mg/ml
Buffer:	PBS, pH 7.3, 0.02% sodium azide, 50% glycerol.
Note:	This product is for research use only.