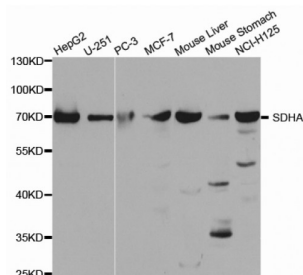


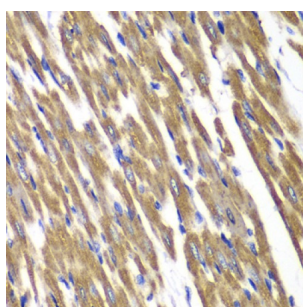
Abbexa Ltd, Innovation Centre, Cambridge Science Park, Cambridge, CB4 0EY, UK
Telephone: +44 (0) 1223 755950 - Fax: +44 (0) 1223 755951 - E-Mail: info@abbexa.com

Succinate Dehydrogenase Complex Subunit A (SDHA) Antibody

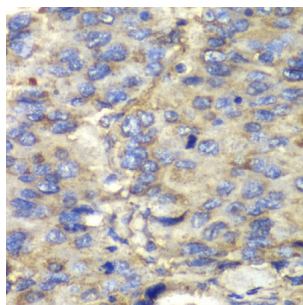
Catalogue No.: abx002028



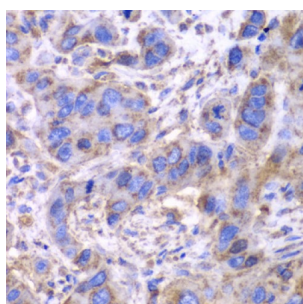
Western blot analysis of extracts of various cell lines, using SDHA antibody (abx002028) at 1/1000 dilution.



Immunohistochemistry of paraffin-embedded rat heart using SDHA antibody (abx002028) at dilution of 1/100 (40x lens).



Immunohistochemistry of paraffin-embedded human liver cancer using SDHA antibody (abx002028) at dilution of 1/100 (40x lens).



Immunohistochemistry of paraffin-embedded human esophageal cancer using SDHA antibody (abx002028) at dilution of 1/100 (40x lens).

SDHA Antibody is a Rabbit Polyclonal antibody against SDHA. This gene encodes a major catalytic subunit of succinate-ubiquinone oxidoreductase, a complex of the mitochondrial respiratory chain. The complex is composed of four nuclear-encoded subunits and is localized in the mitochondrial inner membrane. Mutations in this gene have been associated with a form of mitochondrial respiratory chain deficiency known as Leigh Syndrome. A pseudogene has been identified on chromosome 3q29.

Target: SDHA

Abbexa Ltd, Innovation Centre, Cambridge Science Park, Cambridge, CB4 0EY, UK
Telephone: +44 (0) 1223 755950 - Fax: +44 (0) 1223 755951 - E-Mail: info@abbexa.com

Reactivity: Human, Mouse, Rat

Host: Rabbit

Clonality: Polyclonal

Tested Applications: WB, IHC, IF/ICC

Recommended dilutions: WB: 1/500 - 1/2000, IHC: 1/50 - 1/200, IF/ICC: 1/10 - 1/100. Optimal dilutions/concentrations should be determined by the end user.

Immunogen: Recombinant protein of human SDHA.

Purification: Affinity purified.

Form: Liquid

Isotype: IgG

Conjugation: Unconjugated

Storage: Aliquot and store at -20 °C. Avoid repeated freeze/thaw cycles.

Molecular Weight: Calculated MW: 56 kDa/67 kDa/72 kDa
Observed MW: 70 kDa

Swiss Prot: [P31040](#)

GeneID: [6389](#)

Gene Symbol: SDHA

Concentration: > 1 mg/ml

Buffer: PBS, pH 7.3, 0.02% sodium azide, 50% glycerol.

Note: This product is for research use only.