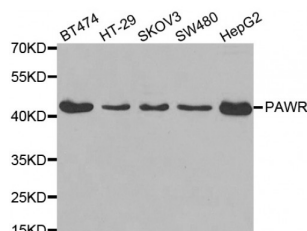


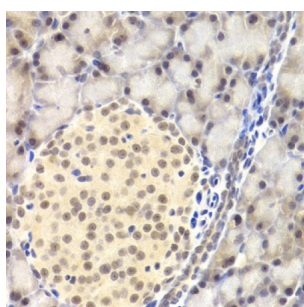
Abbexa Ltd, Innovation Centre, Cambridge Science Park, Cambridge, CB4 0EY, UK  
Telephone: +44 (0) 1223 755950 - Fax: +44 (0) 1223 755951 - E-Mail: [info@abbexa.com](mailto:info@abbexa.com)

## Prostate Apoptosis Response 4 Protein (PAWR) Antibody

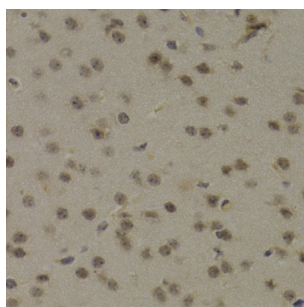
Catalogue No.: abx002208



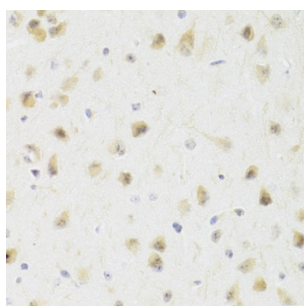
Western blot analysis of extracts of various cell lines, using PAWR antibody (abx002208) at 1:400 dilution.



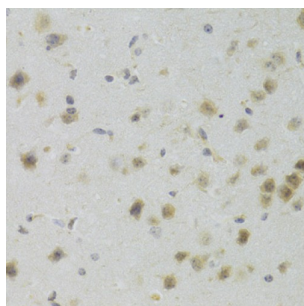
Immunohistochemistry of paraffin-embedded rat pancreas using PAWR Antibody (abx002208) at dilution of 1/200 (40x lens).



Immunohistochemistry of paraffin-embedded mouse brain using PAWR Antibody (abx002208) at dilution of 1/200 (40x lens).



Immunohistochemistry of paraffin-embedded rat brain using PAWR Antibody (abx002208) at dilution of 1/100 (40x lens).



Immunohistochemistry of paraffin-embedded mouse brain using PAWR Antibody (abx002208) at dilution of 1/100 (40x lens).

PAWR Antibody is a Rabbit Polyclonal antibody against PAWR. The tumor suppressor WT1 represses and activates

Abbexa Ltd, Innovation Centre, Cambridge Science Park, Cambridge, CB4 0EY, UK  
Telephone: +44 (0) 1223 755950 - Fax: +44 (0) 1223 755951 - E-Mail: [info@abbexa.com](mailto:info@abbexa.com)

transcription. The protein encoded by this gene is a WT1-interacting protein that itself functions as a transcriptional repressor. It contains a putative leucine zipper domain which interacts with the zinc finger DNA binding domain of WT1. This protein is specifically upregulated during apoptosis of prostate cells.

**Target:** PAWR

**Reactivity:** Human, Mouse, Rat

**Host:** Rabbit

**Clonality:** Polyclonal

**Tested Applications:** WB, IHC

**Recommended dilutions:** WB: 1/500 - 1/2000, IHC: 1/50 - 1/100. Optimal dilutions/concentrations should be determined by the end user.

**Immunogen:** A synthetic peptide of human PRKC.

**Purification:** Affinity purified.

**Form:** Liquid

**Isotype:** IgG

**Conjugation:** Unconjugated

**Storage:** Aliquot and store at -20 °C. Avoid repeated freeze/thaw cycles.

**Molecular Weight:** Calculated MW: 36 kDa  
Observed MW: 43 kDa

**Swiss Prot:** [Q96LZ0](#)

**GeneID:** [5074](#)

**Gene Symbol:** PAWR

**Concentration:** > 1 mg/ml

**Buffer:** PBS, pH 7.3, 0.02% sodium azide, 50% glycerol.

**Note:** This product is for research use only.