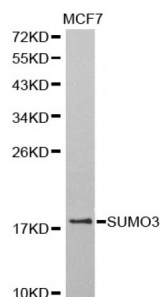


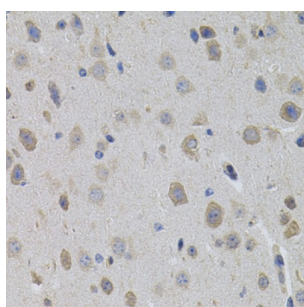
Abbexa Ltd, Innovation Centre, Cambridge Science Park, Cambridge, CB4 0EY, UK  
Telephone: +44 (0) 1223 755950 - Fax: +44 (0) 1223 755951 - E-Mail: [info@abbexa.com](mailto:info@abbexa.com)

## Small Ubiquitin-Related Modifier 3 (SUMO3) Antibody

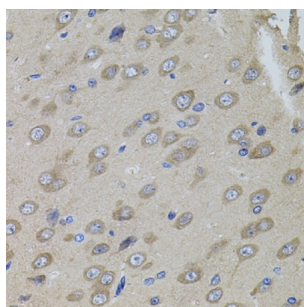
Catalogue No.: abx002228



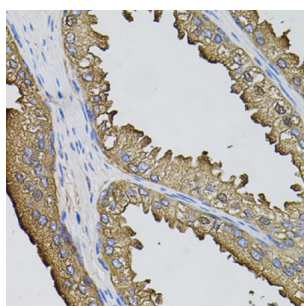
Western blot analysis of extracts of MCF-7 cells, using SUMO3 antibody (abx002228) at 1:800 dilution.



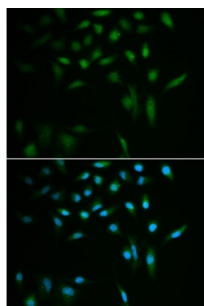
Immunohistochemistry of paraffin-embedded mouse brain using SUMO3 antibody (abx002228) (40x lens).



Immunohistochemistry of paraffin-embedded rat brain using SUMO3 antibody (abx002228) (40x lens).



Immunohistochemistry of paraffin-embedded human prostate using SUMO3 antibody (abx002228) (40x lens).



Immunofluorescence analysis of A549 cells using SUMO3 antibody (abx002228). Blue: DAPI for nuclear staining.

SUMO3 Antibody is a Rabbit Polyclonal antibody against SUMO3. This gene encodes a member of the small ubiquitin-related

Abbexa Ltd, Innovation Centre, Cambridge Science Park, Cambridge, CB4 0EY, UK  
Telephone: +44 (0) 1223 755950 - Fax: +44 (0) 1223 755951 - E-Mail: [info@abbexa.com](mailto:info@abbexa.com)

modifier (SUMO) family of eukaryotic proteins. The encoded protein is covalently conjugated to other proteins via a post-translation modification known as sumoylation. Sumoylation may play a role in a wide variety of cellular processes, including nuclear transport, DNA replication and repair, mitosis, transcriptional regulation, and signal transduction. Alternatively spliced transcript variants encoding distinct proteins have been described.

**Target:** SUMO3

**Reactivity:** Human, Mouse, Rat

**Host:** Rabbit

**Clonality:** Polyclonal

**Tested Applications:** WB, IHC, IF/ICC

**Recommended dilutions:** WB: 1/1000 - 1/2000, IHC: 1/50 - 1/100, IF/ICC: 1/100 - 1/300. Optimal dilutions/concentrations should be determined by the end user.

**Immunogen:** A synthetic peptide of human SUMO3.

**Purification:** Affinity purified.

**Form:** Liquid

**Isotype:** IgG

**Conjugation:** Unconjugated

**Storage:** Aliquot and store at -20 °C. Avoid repeated freeze/thaw cycles.

**Molecular Weight:** Calculated MW: 11 kDa/15 kDa  
Observed MW: 19 kDa

**Swiss Prot:** [P55854](#)

**GeneID:** [6612](#)

**Gene Symbol:** SUMO3

**Concentration:** > 1 mg/ml

**Buffer:** PBS, pH 7.3, 0.02% sodium azide, 50% glycerol.

**Note:** This product is for research use only.