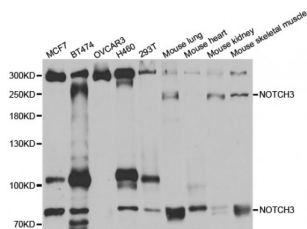


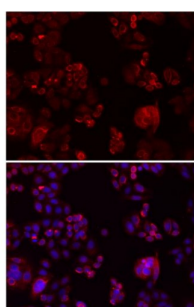
Abbexa Ltd, Innovation Centre, Cambridge Science Park, Cambridge, CB4 0EY, UK
Telephone: +44 (0) 1223 755950 - Fax: +44 (0) 1223 755951 - E-Mail: info@abbexa.com

Neurogenic Locus Notch Homolog Protein 3 (NOTCH3) Antibody

Catalogue No.: abx002237



Western blot analysis of extracts of various cell lines, using NOTCH3 antibody (abx002237) at 1:400 dilution.



Immunofluorescence analysis of SW480 cells showing nuclear and cytoplasmic localization with NOTCH3 antibody (abx002237) 1/200 (top, red)..

NOTCH3 Antibody is a Rabbit Polyclonal antibody against NOTCH3. This gene encodes the third discovered human homologue of the *Drosophila melanogaster* type I membrane protein notch. In *Drosophila*, notch interaction with its cell-bound ligands (delta, serrate) establishes an intercellular signalling pathway that plays a key role in neural development. Homologues of the notch-ligands have also been identified in human, but precise interactions between these ligands and the human notch homologues remains to be determined. Mutations in NOTCH3 have been identified as the underlying cause of cerebral autosomal dominant arteriopathy with subcortical infarcts and leukoencephalopathy (CADASIL).

Target: NOTCH3

Reactivity: Human, Mouse

Host: Rabbit

Clonality: Polyclonal

Tested Applications: WB, IF/ICC

Recommended dilutions: WB: 1/200 - 1/1000, IF/ICC: 1/20 - 1/200. Optimal dilutions/concentrations should be determined by the end user.

Immunogen: A synthetic peptide of human NOTCH3.

Purification: Affinity purified.

Abbexa Ltd, Innovation Centre, Cambridge Science Park, Cambridge, CB4 0EY, UK
Telephone: +44 (0) 1223 755950 - Fax: +44 (0) 1223 755951 - E-Mail: info@abbexa.com

Form:	Liquid
Isotype:	IgG
Conjugation:	Unconjugated
Storage:	Aliquot and store at -20 °C. Avoid repeated freeze/thaw cycles.
Molecular Weight:	Calculated MW: 243 kDa Observed MW: 250 kDa
Swiss Prot:	Q9UM47
GeneID:	4854
Gene Symbol:	NOTCH3
Concentration:	> 1 mg/ml
Buffer:	PBS, pH 7.3, 0.02% sodium azide, 50% glycerol.
Note:	This product is for research use only.