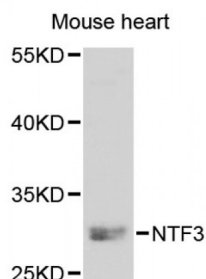


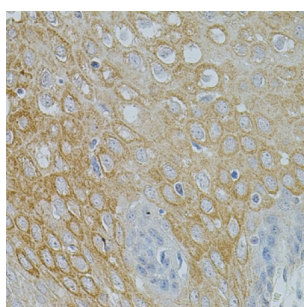
Abbexa Ltd, Innovation Centre, Cambridge Science Park, Cambridge, CB4 0EY, UK
Telephone: +44 (0) 1223 755950 - Fax: +44 (0) 1223 755951 - E-Mail: info@abbexa.com

Neurotrophin 3 (NTF3) Antibody

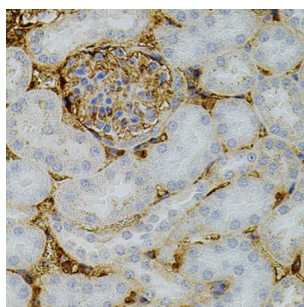
Catalogue No.: abx002281



Western blot analysis of extracts of mouse heart, using NTF3 antibody (abx002281) at 1:250 dilution.



Immunohistochemistry of paraffin-embedded human esophagus using NTF3 antibody (abx002281) at dilution of 1/100 (40x lens).



Immunohistochemistry of paraffin-embedded mouse kidney using NTF3 antibody (abx002281) at dilution of 1/100 (40x lens).

NTF3 Antibody is a Rabbit Polyclonal antibody against NTF3. The protein encoded by this gene is a member of the neurotrophin family, that controls survival and differentiation of mammalian neurons. This protein is closely related to both nerve growth factor and brain-derived neurotrophic factor. It may be involved in the maintenance of the adult nervous system, and may affect development of neurons in the embryo when it is expressed in human placenta. NTF3-deficient mice generated by gene targeting display severe movement defects of the limbs. The mature peptide of this protein is identical in all mammals examined including human, pig, rat and mouse.

Target:	NTF3
Reactivity:	Human, Mouse
Host:	Rabbit
Clonality:	Polyclonal
Tested Applications:	WB, IHC

Abbexa Ltd, Innovation Centre, Cambridge Science Park, Cambridge, CB4 0EY, UK
Telephone: +44 (0) 1223 755950 - Fax: +44 (0) 1223 755951 - E-Mail: info@abbexa.com

Recommended dilutions: WB: 1/500 - 1/1000, IHC: 1/100 - 1/200. Optimal dilutions/concentrations should be determined by the end user.

Immunogen: Recombinant protein of human NTF3.

Purification: Affinity purified.

Form: Liquid

Isotype: IgG

Conjugation: Unconjugated

Storage: Aliquot and store at -20 °C. Avoid repeated freeze/thaw cycles.

Molecular Weight: Calculated MW: 29 kDa/30 kDa
Observed MW: 29 kDa

Swiss Prot: [P20783](#)

GeneID: [4908](#)

Gene Symbol: NTF3

Concentration: > 1 mg/ml

Buffer: PBS, pH 7.3, 0.02% sodium azide, 50% glycerol.

Note: This product is for research use only.