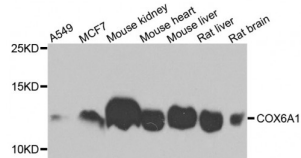


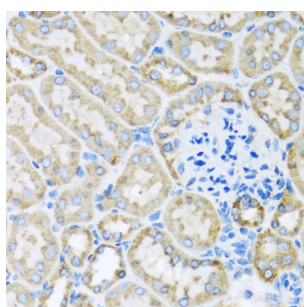
Abbexa Ltd, Innovation Centre, Cambridge Science Park, Cambridge, CB4 0EY, UK
Telephone: +44 (0) 1223 755950 - Fax: +44 (0) 1223 755951 - E-Mail: info@abbexa.com

Cytochrome C Oxidase Subunit 6A1 (COX6A1) Antibody

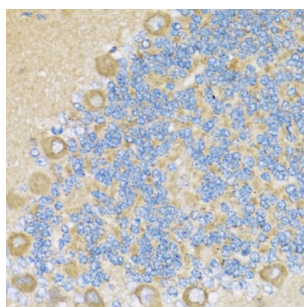
Catalogue No.: abx002749



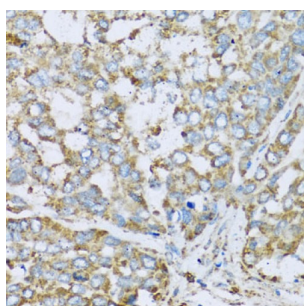
Western blot analysis of extracts of various cell lines, using COX6A1 antibody (abx002749) at 1/1000 dilution.



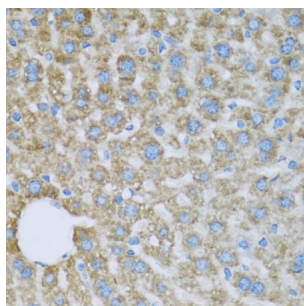
Immunohistochemistry of paraffin-embedded mouse kidney using COX6A1 antibody (abx002749) at dilution of 1/100 (40x lens).



Immunohistochemistry of paraffin-embedded rat cerebellum using COX6A1 antibody (abx002749) at dilution of 1/100 (40x lens).



Immunohistochemistry of paraffin-embedded human liver cancer using COX6A1 antibody (abx002749) at dilution of 1/100 (40x lens).



Immunohistochemistry of paraffin-embedded mouse liver using COX6A1 antibody (abx002749) at dilution of 1/100 (40x lens).

COX6A1 Antibody is a Rabbit Polyclonal antibody against COX6A1. Cytochrome c oxidase (COX), the terminal enzyme of the

Abbexa Ltd, Innovation Centre, Cambridge Science Park, Cambridge, CB4 0EY, UK
Telephone: +44 (0) 1223 755950 - Fax: +44 (0) 1223 755951 - E-Mail: info@abbexa.com

mitochondrial respiratory chain, catalyzes the electron transfer from reduced cytochrome c to oxygen. It is a heteromeric complex consisting of 3 catalytic subunits encoded by mitochondrial genes and multiple structural subunits encoded by nuclear genes. The mitochondrially-encoded subunits function in the electron transfer and the nuclear-encoded subunits may function in the regulation and assembly of the complex. This nuclear gene encodes polypeptide 1 (liver isoform) of subunit VIa, and polypeptide 1 is found in all non-muscle tissues. Polypeptide 2 (heart/muscle isoform) of subunit VIa is encoded by a different gene, and is present only in striated muscles. These two polypeptides share 66% amino acid sequence identity. It has been reported that there may be several pseudogenes on chromosomes 1, 6, 7q21, 7q31-32 and 12. However, only one pseudogene (COX6A1P) on chromosome 1p31.1 has been documented.

Target: COX6A1

Reactivity: Human, Mouse, Rat

Host: Rabbit

Clonality: Polyclonal

Tested Applications: WB, IHC

Recommended dilutions: WB: 1/200 - 1/2000, IHC: 1/20 - 1/200. Optimal dilutions/concentrations should be determined by the end user.

Immunogen: Recombinant protein of human COX6A1.

Purification: Affinity purified.

Form: Liquid

Isotype: IgG

Conjugation: Unconjugated

Storage: Aliquot and store at -20 °C. Avoid repeated freeze/thaw cycles.

Molecular Weight: Calculated MW: 12 kDa
Observed MW: 12 kDa

Swiss Prot: [P12074](#)

GeneID: [1337](#)

Gene Symbol: COX6A1

Concentration: > 1 mg/ml

Buffer: PBS, pH 7.3, 0.02% sodium azide, 50% glycerol.

Note: This product is for research use only.