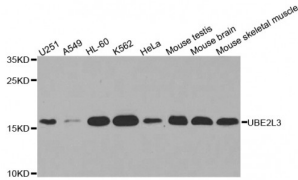


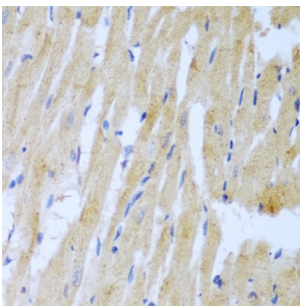
Abbexa Ltd, Innovation Centre, Cambridge Science Park, Cambridge, CB4 0EY, UK
 Telephone: +44 (0) 1223 755950 - Fax: +44 (0) 1223 755951 - E-Mail: info@abbexa.com

Ubiquitin-Conjugating Enzyme E2 L3 (UBE2L3) Antibody

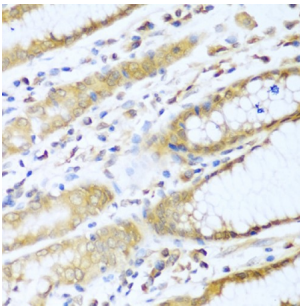
Catalogue No.: abx003086



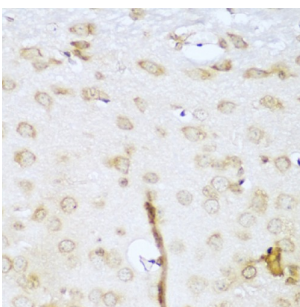
Western blot analysis of extracts of various cell lines, using UBE2L3 antibody (abx003086) at 1/1000 dilution.



Immunohistochemistry of paraffin-embedded rat heart using UBE2L3 antibody (abx003086) at dilution of 1/100 (40x lens).



Immunohistochemistry of paraffin-embedded human stomach using UBE2L3 antibody (abx003086) at dilution of 1/100 (40x lens).



Immunohistochemistry of paraffin-embedded mouse brain using UBE2L3 antibody (abx003086) at dilution of 1/100 (40x lens).

UBE2L3 Antibody is a Rabbit Polyclonal antibody against UBE2L3. The modification of proteins with ubiquitin is an important cellular mechanism for targeting abnormal or short-lived proteins for degradation. Ubiquitination involves at least three classes of enzymes: ubiquitin-activating enzymes (E1s), ubiquitin-conjugating enzymes (E2s) and ubiquitin-protein ligases (E3s). This gene encodes a member of the E2 ubiquitin-conjugating enzyme family. This enzyme is demonstrated to participate in the ubiquitination of p53, c-Fos, and the NF- κ B precursor p105 in vitro. Several alternatively spliced transcript variants have been found for this gene.

Abbexa Ltd, Innovation Centre, Cambridge Science Park, Cambridge, CB4 0EY, UK
Telephone: +44 (0) 1223 755950 - Fax: +44 (0) 1223 755951 - E-Mail: info@abbexa.com

Target:	UBE2L3
Reactivity:	Human, Mouse, Rat
Host:	Rabbit
Clonality:	Polyclonal
Tested Applications:	WB, IHC
Recommended dilutions:	WB: 1/1000 - 1/2000, IHC: 1/50 - 1/100. Optimal dilutions/concentrations should be determined by the end user.
Immunogen:	Recombinant protein of human UBE2L3.
Purification:	Affinity purified.
Form:	Liquid
Isotype:	IgG
Conjugation:	Unconjugated
Storage:	Aliquot and store at -20 °C. Avoid repeated freeze/thaw cycles.
Molecular Weight:	Calculated MW: 14 kDa/17 kDa/24 kDa Observed MW: 17 kDa
Swiss Prot:	P68036
GeneID:	7332
Gene Symbol:	UBE2L3
Concentration:	> 1 mg/ml
Buffer:	PBS, pH 7.3, 0.02% sodium azide, 50% glycerol.
Note:	This product is for research use only.