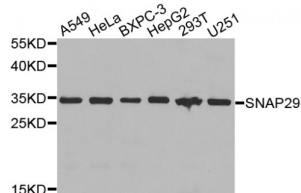


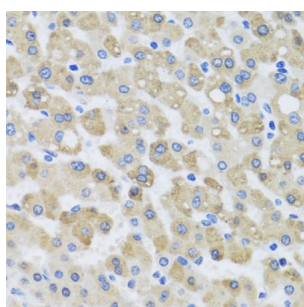
Abbexa Ltd, Innovation Centre, Cambridge Science Park, Cambridge, CB4 0EY, UK
Telephone: +44 (0) 1223 755950 - Fax: +44 (0) 1223 755951 - E-Mail: info@abbexa.com

Synaptosome Associated Protein 29 (SNAP29) Antibody

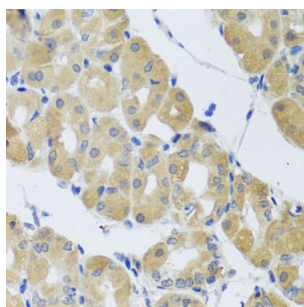
Catalogue No.: abx003186



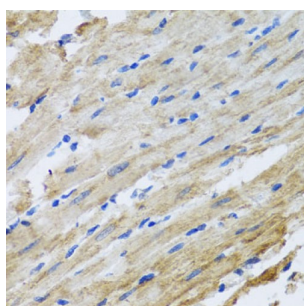
Western blot analysis of extracts of various cell lines, using SNAP29 antibody (abx003186) at 1/1000 dilution.



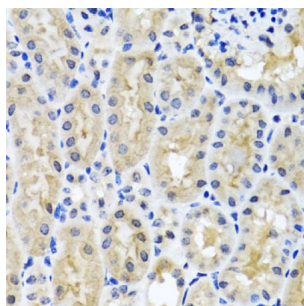
Immunohistochemistry of paraffin-embedded human liver injury using SNAP29 antibody (abx003186) at dilution of 1/100 (40x lens).



Immunohistochemistry of paraffin-embedded human stomach using SNAP29 antibody (abx003186) at dilution of 1/100 (40x lens).



Immunohistochemistry of paraffin-embedded rat heart using SNAP29 antibody (abx003186) at dilution of 1/100 (40x lens).



Immunohistochemistry of paraffin-embedded mouse kidney using SNAP29 antibody (abx003186) at dilution of 1/100 (40x lens).

SNAP29 Antibody is a Rabbit Polyclonal antibody against SNAP29. This gene, a member of the SNAP25 gene family, encodes

Abbexa Ltd, Innovation Centre, Cambridge Science Park, Cambridge, CB4 0EY, UK
Telephone: +44 (0) 1223 755950 - Fax: +44 (0) 1223 755951 - E-Mail: info@abbexa.com

a protein involved in multiple membrane trafficking steps. Two other members of this gene family, SNAP23 and SNAP25, encode proteins that bind a syntaxin protein and mediate synaptic vesicle membrane docking and fusion to the plasma membrane. The protein encoded by this gene binds tightly to multiple syntaxins and is localized to intracellular membrane structures rather than to the plasma membrane. While the protein is mostly membrane-bound, a significant fraction of it is found free in the cytoplasm. Use of multiple polyadenylation sites has been noted for this gene.

Target: SNAP29

Reactivity: Human, Mouse, Rat

Host: Rabbit

Clonality: Polyclonal

Tested Applications: WB, IHC

Recommended dilutions: WB: 1/1000 - 1/4000, IHC: 1/50 - 1/200. Optimal dilutions/concentrations should be determined by the end user.

Immunogen: Recombinant protein of human SNAP29.

Purification: Affinity purified.

Form: Liquid

Isotype: IgG

Conjugation: Unconjugated

Storage: Aliquot and store at -20 °C. Avoid repeated freeze/thaw cycles.

Molecular Weight: Calculated MW: 28 kDa
Observed MW: 35 kDa

Swiss Prot: [O95721](#)

GeneID: [9342](#)

Gene Symbol: SNAP29

Concentration: > 1 mg/ml

Buffer: PBS, pH 7.3, 0.02% sodium azide, 50% glycerol.

Note: This product is for research use only.