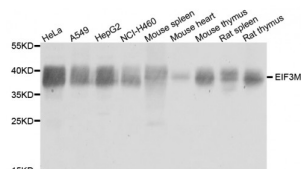


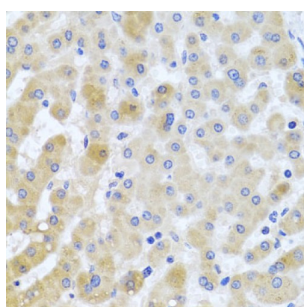
Abbexa Ltd, Innovation Centre, Cambridge Science Park, Cambridge, CB4 0EY, UK
Telephone: +44 (0) 1223 755950 - Fax: +44 (0) 1223 755951 - E-Mail: info@abbexa.com

Eukaryotic Translation Initiation Factor 3 Subunit M (EIF3M) Antibody

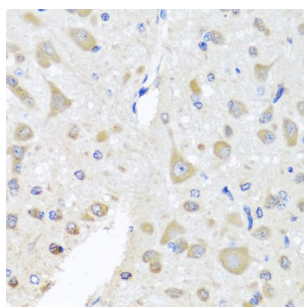
Catalogue No.: abx003305



Western blot analysis of extracts of various cell lines, using EIF3M antibody (abx003305) at 1/1000 dilution.



Immunohistochemistry of paraffin-embedded human liver injury using EIF3M antibody (abx003305) at dilution of 1/100 (40x lens).



Immunohistochemistry of paraffin-embedded rat brain using EIF3M antibody (abx003305) at dilution of 1/100 (40x lens).

EIF3M Antibody is a Rabbit Polyclonal antibody against EIF3M. This gene encodes a protein that is part of the eukaryotic translation initiation factor 3 complete (eIF-3) required for protein synthesis. Elevated levels of the encoded protein are present in cancer cell lines. Inactivation of the encoded protein has been shown to interfere with translation of herpes virus mRNAs by preventing the association of mRNAs with the ribosomes. A pseudogene of this gene is located on the X chromosome.

Target: EIF3M

Reactivity: Human, Mouse, Rat

Host: Rabbit

Clonality: Polyclonal

Tested Applications: WB, IHC

Abbexa Ltd, Innovation Centre, Cambridge Science Park, Cambridge, CB4 0EY, UK
Telephone: +44 (0) 1223 755950 - Fax: +44 (0) 1223 755951 - E-Mail: info@abbexa.com

Recommended dilutions: WB: 1/500 - 1/2000, IHC: 1/50 - 1/200. Optimal dilutions/concentrations should be determined by the end user.

Immunogen: Recombinant protein of human EIF3M.

Purification: Affinity purified.

Form: Liquid

Isotype: IgG

Conjugation: Unconjugated

Storage: Aliquot and store at -20 °C. Avoid repeated freeze/thaw cycles.

Molecular Weight: Calculated MW: 27 kDa/42 kDa
Observed MW: 40 kDa

Swiss Prot: [Q7L2H7](#)

GeneID: [10480](#)

Gene Symbol: EIF3M

Concentration: > 1 mg/ml

Buffer: PBS, pH 7.3, 0.02% sodium azide, 50% glycerol.

Note: This product is for research use only.