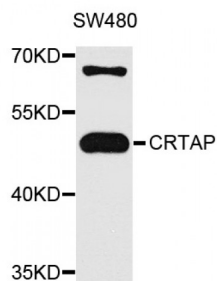


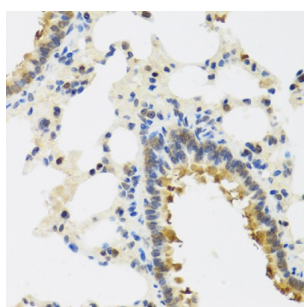
Abbexa Ltd, Innovation Centre, Cambridge Science Park, Cambridge, CB4 0EY, UK  
Telephone: +44 (0) 1223 755950 - Fax: +44 (0) 1223 755951 - E-Mail: [info@abbexa.com](mailto:info@abbexa.com)

## Cartilage Associated Protein (CRTAP) Antibody

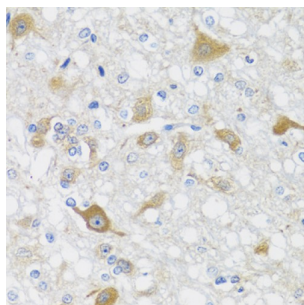
Catalogue No.: abx003307



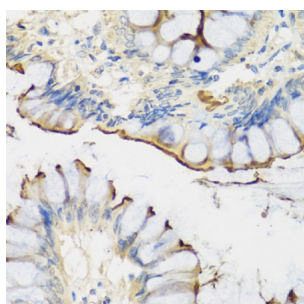
Western blot analysis of extracts of SW480 cells, using CRTAP antibody (abx003307) at 1/1000 dilution.



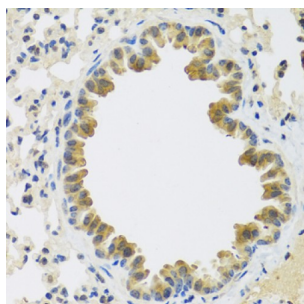
Immunohistochemistry of paraffin-embedded rat lung using CRTAP antibody (abx003307) at dilution of 1/100 (40x lens).



Immunohistochemistry of paraffin-embedded rat brain using CRTAP antibody (abx003307) at dilution of 1/100 (40x lens).



Immunohistochemistry of paraffin-embedded human colon using CRTAP antibody (abx003307) at dilution of 1/100 (40x lens).



Immunohistochemistry of paraffin-embedded mouse lung using CRTAP antibody (abx003307) at dilution of 1/100 (40x lens).

CRTAP Antibody is a Rabbit Polyclonal antibody against CRTAP. The protein encoded by this gene is similar to the chicken and

Abbexa Ltd, Innovation Centre, Cambridge Science Park, Cambridge, CB4 0EY, UK  
Telephone: +44 (0) 1223 755950 - Fax: +44 (0) 1223 755951 - E-Mail: [info@abbexa.com](mailto:info@abbexa.com)

mouse CRTAP genes. The encoded protein is a scaffolding protein that may influence the activity of at least one member of the cytohesin/ARNO family in response to specific cellular stimuli. Defects in this gene are associated with osteogenesis imperfecta, a connective tissue disorder characterized by bone fragility and low bone mass.

**Target:** CRTAP

**Reactivity:** Human, Mouse, Rat

**Host:** Rabbit

**Clonality:** Polyclonal

**Tested Applications:** WB, IHC

**Recommended dilutions:** WB: 1/500 - 1/2000, IHC: 1/50 - 1/200. Optimal dilutions/concentrations should be determined by the end user.

**Immunogen:** Recombinant protein of human CRTAP.

**Purification:** Affinity purified.

**Form:** Liquid

**Isotype:** IgG

**Conjugation:** Unconjugated

**Storage:** Aliquot and store at -20 °C. Avoid repeated freeze/thaw cycles.

**Molecular Weight:** Calculated MW: 46 kDa  
Observed MW: 50 kDa

**Swiss Prot:** [O75718](#)

**GeneID:** [10491](#)

**Gene Symbol:** CRTAP

**Concentration:** > 1 mg/ml

**Buffer:** PBS, pH 7.3, 0.02% sodium azide, 50% glycerol.

**Note:** This product is for research use only.