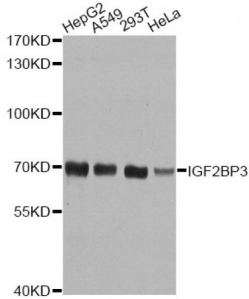


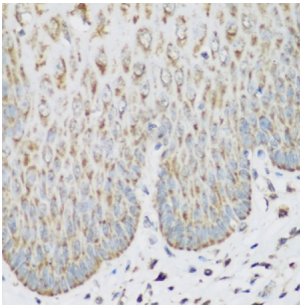
Abbexa Ltd, Innovation Centre, Cambridge Science Park, Cambridge, CB4 0EY, UK
 Telephone: +44 (0) 1223 755950 - Fax: +44 (0) 1223 755951 - E-Mail: info@abbexa.com

Insulin Like Growth Factor 2 mRNA Binding Protein 3 (IGF2BP3) Antibody

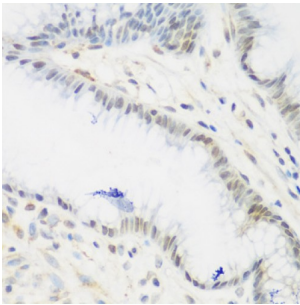
Catalogue No.: abx003323



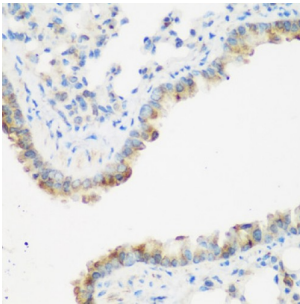
Western blot analysis of extracts of various cell lines, using IGF2BP3 antibody (abx003323) at 1/1000 dilution.



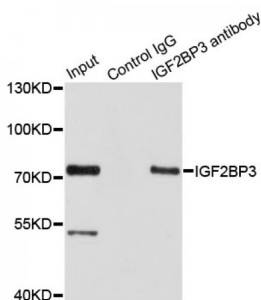
Immunohistochemistry of paraffin-embedded human esophagus using IGF2BP3 antibody (abx003323) at dilution of 1/200 (40x lens).



Immunohistochemistry of paraffin-embedded human stomach using IGF2BP3 antibody (abx003323) at dilution of 1/200 (40x lens).



Immunohistochemistry of paraffin-embedded mouse lung using IGF2BP3 antibody (abx003323) at dilution of 1/200 (40x lens).



Immunoprecipitation analysis of 100 µg extracts of HepG2 cells using 3 µg IGF2BP3 antibody (abx003323). Western blot was performed from the immunoprecipitate using IGF2BP3 antibody (abx003323) at a dilution of 1/1000.

Abbexa Ltd, Innovation Centre, Cambridge Science Park, Cambridge, CB4 0EY, UK
Telephone: +44 (0) 1223 755950 - Fax: +44 (0) 1223 755951 - E-Mail: info@abbexa.com

IGF2BP3 Antibody is a Rabbit Polyclonal antibody against IGF2BP3. The protein encoded by this gene is primarily found in the nucleolus, where it can bind to the 5' UTR of the insulin-like growth factor II leader 3 mRNA and may repress translation of insulin-like growth factor II during late development. The encoded protein contains several KH domains, which are important in RNA binding and are known to be involved in RNA synthesis and metabolism. A pseudogene exists on chromosome 7, and there are putative pseudogenes on other chromosomes.

Target:	IGF2BP3
Reactivity:	Human, Mouse
Host:	Rabbit
Clonality:	Polyclonal
Tested Applications:	WB, IHC, IP
Recommended dilutions:	WB: 1/500 - 1/2000, IHC: 1/50 - 1/200, IP: 1/20 - 1/50. Optimal dilutions/concentrations should be determined by the end user.
Immunogen:	Recombinant protein of human IGF2BP3.
Purification:	Affinity purified.
Form:	Liquid
Isotype:	IgG
Conjugation:	Unconjugated
Storage:	Aliquot and store at -20 °C. Avoid repeated freeze/thaw cycles.
Molecular Weight:	Calculated MW: 21 kDa/63 kDa Observed MW: 70 kDa
Swiss Prot:	O00425
GeneID:	10643
Gene Symbol:	IGF2BP3
Concentration:	> 1 mg/ml
Buffer:	PBS, pH 7.3, 0.02% sodium azide, 50% glycerol.
Note:	This product is for research use only.