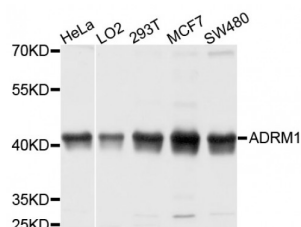


Abbexa Ltd, Innovation Centre, Cambridge Science Park, Cambridge, CB4 0EY, UK
Telephone: +44 (0) 1223 755950 - Fax: +44 (0) 1223 755951 - E-Mail: info@abbexa.com

Proteasomal Ubiquitin Receptor ADRM1 (ADRM1) Antibody

Catalogue No.: abx003352



Western blot analysis of extracts of various cell lines, using ADRM1 antibody (abx003352) at 1/1000 dilution.

ADRM1 Antibody is a Rabbit Polyclonal antibody against ADRM1. This gene encodes a member of the adhesion regulating molecule 1 protein family. The encoded protein is a component of the proteasome where it acts as a ubiquitin receptor and recruits the deubiquitinating enzyme, ubiquitin carboxyl-terminal hydrolase L5. Increased levels of the encoded protein are associated with increased cell adhesion, which is likely an indirect effect of this intracellular protein. Dysregulation of this gene has been implicated in carcinogenesis. Alternative splicing results in multiple transcript variants.

Target: ADRM1

Reactivity: Human, Mouse, Rat

Host: Rabbit

Clonality: Polyclonal

Tested Applications: WB

Recommended dilutions: WB: 1/1000 - 1/4000. Optimal dilutions/concentrations should be determined by the end user.

Immunogen: Recombinant protein of human ADRM1.

Purification: Affinity purified.

Form: Liquid

Isotype: IgG

Conjugation: Unconjugated

Storage: Aliquot and store at -20 °C. Avoid repeated freeze/thaw cycles.

Molecular Weight: Calculated MW: 42 kDa
Observed MW: 42 kDa

Abbexa Ltd, Innovation Centre, Cambridge Science Park, Cambridge, CB4 0EY, UK
Telephone: +44 (0) 1223 755950 - Fax: +44 (0) 1223 755951 - E-Mail: info@abbexa.com

Swiss Prot: [Q16186](#)

GeneID: [11047](#)

Gene Symbol: ADRM1

Concentration: > 1 mg/ml

Buffer: PBS, pH 7.3, 0.02% sodium azide, 50% glycerol.

Note: This product is for research use only.