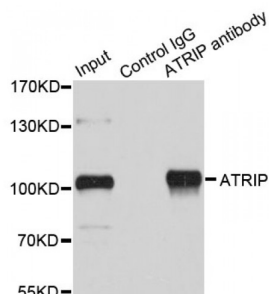


Abbexa Ltd, Innovation Centre, Cambridge Science Park, Cambridge, CB4 0EY, UK
Telephone: +44 (0) 1223 755950 - Fax: +44 (0) 1223 755951 - E-Mail: info@abbexa.com

ATR-Interacting Protein (ATRIP) Antibody

Catalogue No.: abx003851



Immunoprecipitation analysis of 200 µg extracts of HeLa cells using 1 µg ATRIP antibody (abx003851). Western blot was performed from the immunoprecipitate using ATRIP antibody (abx003851) at a dilution of 1/1000.

ATRIP Antibody is a Rabbit Polyclonal antibody against ATRIP. This gene encodes an essential component of the DNA damage checkpoint. The encoded protein binds to single-stranded DNA coated with replication protein A. The protein also interacts with the ataxia telangiectasia and Rad3 related protein kinase, resulting in its accumulation at intranuclear foci induced by DNA damage. Multiple transcript variants encoding different isoforms have been found for this gene.

Target: ATRIP

Reactivity: Human

Host: Rabbit

Clonality: Polyclonal

Tested Applications: WB, IF/ICC, IP

Recommended dilutions: WB: 1/500 - 1/2000, IF/ICC: 1/50 - 1/200, IP: 1/20 - 1/50. Optimal dilutions/concentrations should be determined by the end user.

Immunogen: Recombinant protein of human ATRIP.

Purification: Affinity purified.

Form: Liquid

Isotype: IgG

Conjugation: Unconjugated

Storage: Aliquot and store at -20 °C. Avoid repeated freeze/thaw cycles.

Molecular Weight: Calculated MW: 72 kDa/76 kDa/83 kDa/85 kDa
Observed MW: Refer to Figures

Abbexa Ltd, Innovation Centre, Cambridge Science Park, Cambridge, CB4 0EY, UK
Telephone: +44 (0) 1223 755950 - Fax: +44 (0) 1223 755951 - E-Mail: info@abbexa.com

Swiss Prot: [Q8WXE1](#)

GeneID: [84126](#)

Gene Symbol: ATRIP

Concentration: > 1 mg/ml

Buffer: PBS, pH 7.3, 0.02% sodium azide, 50% glycerol.

Note: This product is for research use only.