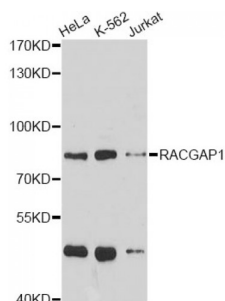


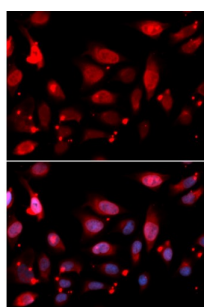
Abbexa Ltd, Innovation Centre, Cambridge Science Park, Cambridge, CB4 0EY, UK  
Telephone: +44 (0) 1223 755950 - Fax: +44 (0) 1223 755951 - E-Mail: [info@abbexa.com](mailto:info@abbexa.com)

## Rac-GTPase Activating Protein 1 (RACGAP1) Antibody

Catalogue No.: abx004048



Western blot analysis of extracts of various cell lines, using RACGAP1 antibody (abx004048) at 1/1000 dilution.



Immunofluorescence analysis of U2OS cells using RACGAP1 antibody (abx004048). Blue: DAPI for nuclear staining.

RACGAP1 Antibody is a Rabbit Polyclonal antibody against RACGAP1. The protein encoded by this gene belongs to the GTPase-activating protein (GAP) family. GAPs bind activated forms of Rho GTPases and stimulate GTP hydrolysis. Through this catalytic function, GAPs negatively regulate Rho-mediated signals. This protein plays a regulatory role in initiation of cytokinesis, controlling cell growth and differentiation of hematopoietic cells, regulating spermatogenesis, and in neuronal proliferation. Alternatively spliced transcript variants have been found for this gene.

**Target:** RACGAP1

**Reactivity:** Human, Mouse, Rat

**Host:** Rabbit

**Clonality:** Polyclonal

**Tested Applications:** WB, IF/ICC

**Recommended dilutions:** WB: 1/500 - 1/2000, IF/ICC: 1/50 - 1/200. Optimal dilutions/concentrations should be determined by the end user.

**Immunogen:** Recombinant protein of human RACGAP1.

**Purification:** Affinity purified.

**Form:** Liquid

Abbexa Ltd, Innovation Centre, Cambridge Science Park, Cambridge, CB4 0EY, UK  
Telephone: +44 (0) 1223 755950 - Fax: +44 (0) 1223 755951 - E-Mail: [info@abbexa.com](mailto:info@abbexa.com)

<b>Isotype:</b>	IgG
<b>Conjugation:</b>	Unconjugated
<b>Storage:</b>	Aliquot and store at -20 °C. Avoid repeated freeze/thaw cycles.
<b>Molecular Weight:</b>	Calculated MW: 71 kDa Observed MW: 82 kDa
<b>Swiss Prot:</b>	<a href="#">Q9H0H5</a>
<b>GeneID:</b>	<a href="#">29127</a>
<b>Gene Symbol:</b>	RACGAP1
<b>Concentration:</b>	> 1 mg/ml
<b>Buffer:</b>	PBS, pH 7.3, 0.02% sodium azide, 50% glycerol.
<b>Note:</b>	This product is for research use only.