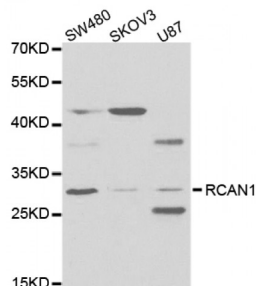


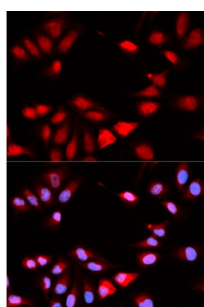
Abbexa Ltd, Innovation Centre, Cambridge Science Park, Cambridge, CB4 0EY, UK
Telephone: +44 (0) 1223 755950 - Fax: +44 (0) 1223 755951 - E-Mail: info@abbexa.com

Calcipressin-1 (RCAN1) Antibody

Catalogue No.: abx004072



Western blot analysis of extracts of various cell lines, using RCAN1 antibody (abx004072) at 1/1000 dilution.



Immunofluorescence analysis of U2OS cells using RCAN1 antibody (abx004072). Blue: DAPI for nuclear staining.

RCAN1 Antibody is a Rabbit Polyclonal antibody against RCAN1. The protein encoded by this gene interacts with calcineurin A and inhibits calcineurin-dependent signaling pathways, possibly affecting central nervous system development. This gene is located in the minimal candidate region for the Down syndrome phenotype, and is overexpressed in the brain of Down syndrome fetuses. Chronic overexpression of this gene may lead to neurofibrillary tangles such as those associated with Alzheimer disease. Alternative splicing results in multiple transcript variants.

Target: RCAN1

Reactivity: Human, Mouse

Host: Rabbit

Clonality: Polyclonal

Tested Applications: WB, IHC, IF/ICC

Recommended dilutions: WB: 1/500 - 1/2000, IHC: 1/50 - 1/200, IF/ICC: 1/20 - 1/50. Optimal dilutions/concentrations should be determined by the end user.

Immunogen: Recombinant protein of human RCAN1.

Purification: Affinity purified.

Form: Liquid

Abbexa Ltd, Innovation Centre, Cambridge Science Park, Cambridge, CB4 0EY, UK
Telephone: +44 (0) 1223 755950 - Fax: +44 (0) 1223 755951 - E-Mail: info@abbexa.com

| | |
|--------------------------|---|
| Isotype: | IgG |
| Conjugation: | Unconjugated |
| Storage: | Aliquot and store at -20 °C. Avoid repeated freeze/thaw cycles. |
| Molecular Weight: | Calculated MW: 13 kDa/19 kDa/22 kDa/28 kDa Observed MW: 31 kDa |
| Swiss Prot: | P53805 |
| GeneID: | 1827 |
| Gene Symbol: | RCAN1 |
| Concentration: | 1.79 mg/ml |
| Buffer: | PBS, pH 7.3, 0.02% sodium azide, 50% glycerol. |
| Note: | This product is for research use only. |