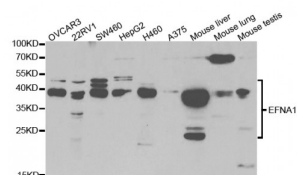


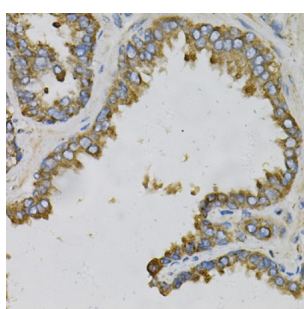
Abbexa Ltd, Innovation Centre, Cambridge Science Park, Cambridge, CB4 0EY, UK
Telephone: +44 (0) 1223 755950 - Fax: +44 (0) 1223 755951 - E-Mail: info@abbexa.com

Ephrin A1 (EFNA1) Antibody

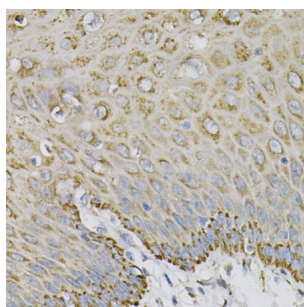
Catalogue No.: abx004083



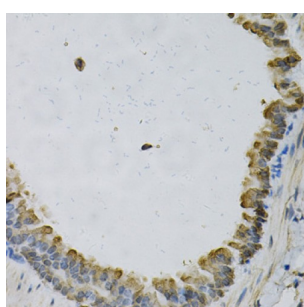
Western blot analysis of extracts of various cell lines, using EFNA1 antibody (abx004083) at 1/1000 dilution.



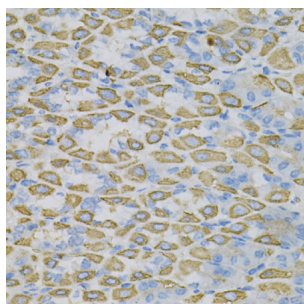
Immunohistochemistry of paraffin-embedded human prostate using EFNA1 Antibody (abx004083) at dilution of 1/100 (40x lens).



Immunohistochemistry of paraffin-embedded human esophagus using EFNA1 Antibody (abx004083) at dilution of 1/100 (40x lens).



Immunohistochemistry of paraffin-embedded mouse lung using EFNA1 Antibody (abx004083) at dilution of 1/100 (40x lens).



Immunohistochemistry of paraffin-embedded mouse stomach using EFNA1 Antibody (abx004083) at dilution of 1/100 (40x lens).

EFNA1 Antibody is a Rabbit Polyclonal antibody against EFNA1. This gene encodes a member of the ephrin (EPH) family. The

Abbexa Ltd, Innovation Centre, Cambridge Science Park, Cambridge, CB4 0EY, UK
Telephone: +44 (0) 1223 755950 - Fax: +44 (0) 1223 755951 - E-Mail: info@abbexa.com

ephrins and EPH-related receptors comprise the largest subfamily of receptor protein-tyrosine kinases and have been implicated in mediating developmental events, especially in the nervous system and in erythropoiesis. Based on their structures and sequence relationships, ephrins are divided into the ephrin-A (EFNA) class, which are anchored to the membrane by a glycosylphosphatidylinositol linkage, and the ephrin-B (EFNB) class, which are transmembrane proteins. This gene encodes an EFNA class ephrin which binds to the EPHA2, EPHA4, EPHA5, EPHA6, and EPHA7 receptors. Two transcript variants that encode different isoforms were identified through sequence analysis.

Target: EFNA1

Reactivity: Human, Mouse

Host: Rabbit

Clonality: Polyclonal

Tested Applications: WB, IHC

Recommended dilutions: WB: 1/500 - 1/2000, IHC: 1/50 - 1/200. Optimal dilutions/concentrations should be determined by the end user.

Immunogen: Recombinant protein of human EFNA1.

Purification: Affinity purified.

Form: Liquid

Isotype: IgG

Conjugation: Unconjugated

Storage: Aliquot and store at -20 °C. Avoid repeated freeze/thaw cycles.

Molecular Weight: Calculated MW: 21 kDa/23 kDa
Observed MW: 38 kDa

Swiss Prot: [P20827](#)

GeneID: [1942](#)

Gene Symbol: EFNA1

Concentration: > 1 mg/ml

Buffer: PBS, pH 7.3, 0.02% sodium azide, 50% glycerol.

Note: This product is for research use only.