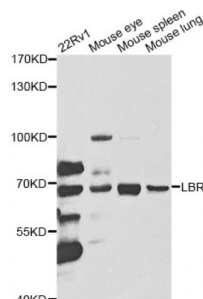


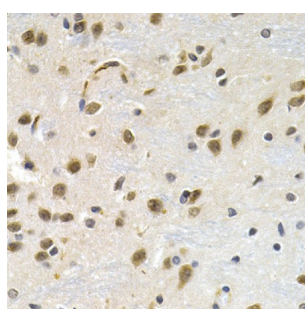
Abbexa Ltd, Innovation Centre, Cambridge Science Park, Cambridge, CB4 0EY, UK
Telephone: +44 (0) 1223 755950 - Fax: +44 (0) 1223 755951 - E-Mail: info@abbexa.com

Lamin-B Receptor (LBR) Antibody

Catalogue No.: abx004188



Western blot analysis of extracts of various cell lines, using LBR antibody (abx004188) at 1/1000 dilution.



Immunohistochemistry of paraffin-embedded rat brain using LBR antibody (abx004188) at dilution of 1/200 (40x lens).

LBR Antibody is a Rabbit Polyclonal antibody against LBR. The protein encoded by this gene belongs to the ERG4/ERG24 family. It localized in the nuclear envelope inner membrane and anchors the lamina and the heterochromatin to the membrane. It may mediate interaction between chromatin and lamin B. Mutations of this gene has been associated with autosomal recessive HEM/Greenberg skeletal dysplasia. Alternative splicing occurs at this locus and two transcript variants encoding the same protein have been identified.

Target: LBR

Reactivity: Human, Mouse, Rat

Host: Rabbit

Clonality: Polyclonal

Tested Applications: WB, IHC

Recommended dilutions: WB: 1/500 - 1/2000, IHC: 1/50 - 1/200. Optimal dilutions/concentrations should be determined by the end user.

Immunogen: Recombinant protein of human LBR.

Purification: Affinity purified.

Form: Liquid

Abbexa Ltd, Innovation Centre, Cambridge Science Park, Cambridge, CB4 0EY, UK
Telephone: +44 (0) 1223 755950 - Fax: +44 (0) 1223 755951 - E-Mail: info@abbexa.com

Isotype:	IgG
Conjugation:	Unconjugated
Storage:	Aliquot and store at -20 °C. Avoid repeated freeze/thaw cycles.
Molecular Weight:	Calculated MW: 70 kDa Observed MW: 71 kDa
Swiss Prot:	<u>Q14739</u>
GeneID:	<u>3930</u>
Gene Symbol:	LBR
Concentration:	> 1 mg/ml
Buffer:	PBS, pH 7.3, 0.02% sodium azide, 50% glycerol.
Note:	This product is for research use only.