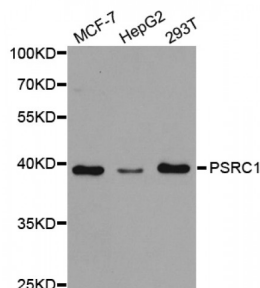


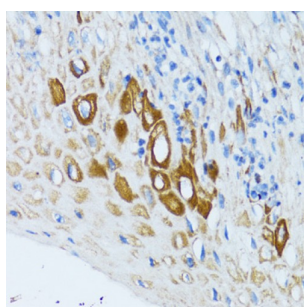
Abbexa Ltd, Innovation Centre, Cambridge Science Park, Cambridge, CB4 0EY, UK
Telephone: +44 (0) 1223 755950 - Fax: +44 (0) 1223 755951 - E-Mail: info@abbexa.com

Proline/Serine Rich Coiled Coil Protein 1 (PSRC1) Antibody

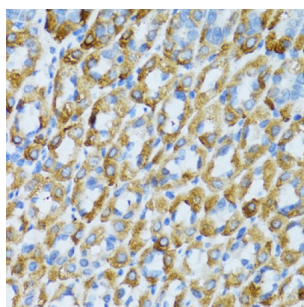
Catalogue No.: abx004201



Western blot analysis of extracts of various cell lines, using PSRC1 antibody (abx004201) at 1/1000 dilution.



Immunohistochemistry of paraffin-embedded human esophagus using PSRC1 antibody (abx004201) at dilution of 1/100 (40x lens).



Immunohistochemistry of paraffin-embedded mouse stomach using PSRC1 antibody (abx004201) at dilution of 1/100 (40x lens).

PSRC1 Antibody is a Rabbit Polyclonal antibody against PSRC1. This gene encodes a proline-rich protein. Studies of this gene and the related mouse gene suggest that this gene is regulated by p53 and may participate in p53-mediated growth suppression. The encoded protein may function as a microtubule destabilizing protein that controls spindle dynamics and mitotic progression by recruiting and regulating microtubule depolymerases. At least one genetic variation in this gene has been associated with decreased serum levels of low-density lipoprotein cholesterol. Alternatively spliced transcript variants encoding different isoforms have been described.

Target:	PSRC1
Reactivity:	Human, Mouse
Host:	Rabbit
Clonality:	Polyclonal
Tested Applications:	WB, IHC

Abbexa Ltd, Innovation Centre, Cambridge Science Park, Cambridge, CB4 0EY, UK
Telephone: +44 (0) 1223 755950 - Fax: +44 (0) 1223 755951 - E-Mail: info@abbexa.com

Recommended dilutions: WB: 1/500 - 1/2000, IHC: 1/50 - 1/200. Optimal dilutions/concentrations should be determined by the end user.

Immunogen: Recombinant protein of human PSRC1.

Purification: Affinity purified.

Form: Liquid

Isotype: IgG

Conjugation: Unconjugated

Storage: Aliquot and store at -20 °C. Avoid repeated freeze/thaw cycles.

Molecular Weight: Calculated MW: 16 kDa/33 kDa/35 kDa/38 kDa
Observed MW: 39 kDa

Swiss Prot: [Q6PGN9](#)

GeneID: [84722](#)

Gene Symbol: PSRC1

Concentration: > 1 mg/ml

Buffer: PBS, pH 7.3, 0.02% sodium azide, 50% glycerol.

Note: This product is for research use only.