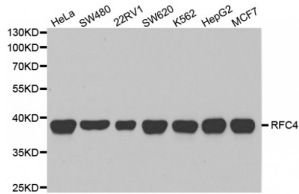


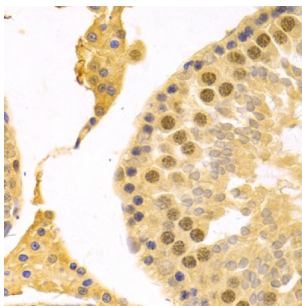
Abbexa Ltd, Innovation Centre, Cambridge Science Park, Cambridge, CB4 0EY, UK
 Telephone: +44 (0) 1223 755950 - Fax: +44 (0) 1223 755951 - E-Mail: info@abbexa.com

Replication Factor C Subunit 4 (RFC4) Antibody

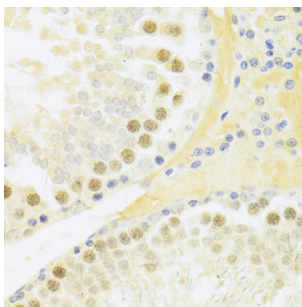
Catalogue No.: abx004202



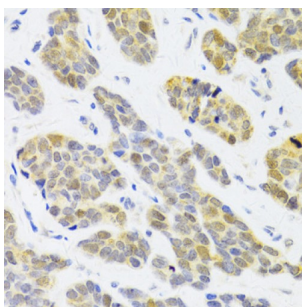
Western blot analysis of extracts of various cell lines, using RFC4 antibody (abx004202) at 1/1000 dilution.



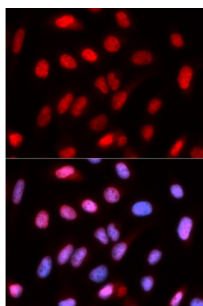
Immunohistochemistry of paraffin-embedded rat testis using RFC4 Antibody (abx004202) at dilution of 1/100 (40x lens).



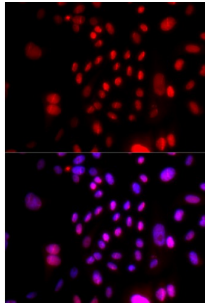
Immunohistochemistry of paraffin-embedded rat testis using RFC4 Antibody (abx004202) at dilution of 1/100 (40x lens).



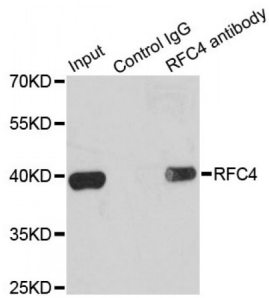
Immunohistochemistry of paraffin-embedded human breast cancer using RFC4 Antibody (abx004202) at dilution of 1/100 (40x lens).



Immunofluorescence analysis of U2OS cells using RFC4 antibody (abx004202). Blue: DAPI for nuclear staining.



Immunofluorescence analysis of U2OS cells using RFC4 antibody (abx004202). Blue: DAPI for nuclear staining.



Immunoprecipitation analysis of 200 µg extracts of K562 cells using 1 µg RFC4 antibody (abx004202). Western blot was performed from the immunoprecipitate using RFC4 antibody (abx004202) at a dilution of 1/1000.

RFC4 Antibody is a Rabbit Polyclonal antibody against RFC4. The elongation of primed DNA templates by DNA polymerase delta and DNA polymerase epsilon requires the accessory proteins proliferating cell nuclear antigen (PCNA) and replication factor C (RFC). RFC, also named activator 1, is a protein complex consisting of five distinct subunits of 140, 40, 38, 37, and 36 kD. This gene encodes the 37 kD subunit. This subunit forms a core complex with the 36 and 40 kDa subunits. The core complex possesses DNA-dependent ATPase activity, which was found to be stimulated by PCNA in an in vitro system. Alternatively spliced transcript variants encoding the same protein have been reported.

Target: RFC4

Reactivity: Human, Rat

Host: Rabbit

Clonality: Polyclonal

Tested Applications: WB, IHC, IF/ICC, IP

Recommended dilutions: WB: 1/500 - 1/2000, IHC: 1/50 - 1/200, IF/ICC: 1/50 - 1/100, IP: 1/50 - 1/200. Optimal dilutions/concentrations should be determined by the end user.

Immunogen: Recombinant protein of human RFC4.

Purification: Affinity purified.

Form: Liquid

Isotype: IgG

Abbexa Ltd, Innovation Centre, Cambridge Science Park, Cambridge, CB4 0EY, UK
Telephone: +44 (0) 1223 755950 - Fax: +44 (0) 1223 755951 - E-Mail: info@abbexa.com

Conjugation:	Unconjugated
Storage:	Aliquot and store at -20 °C. Avoid repeated freeze/thaw cycles.
Molecular Weight:	Calculated MW: 33 kDa/39 kDa Observed MW: 38 kDa
Swiss Prot:	P35249
GeneID:	5984
Gene Symbol:	RFC4
Concentration:	> 1 mg/ml
Buffer:	PBS, pH 7.3, 0.02% sodium azide, 50% glycerol.
Note:	This product is for research use only.