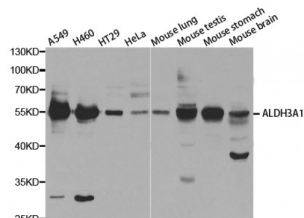


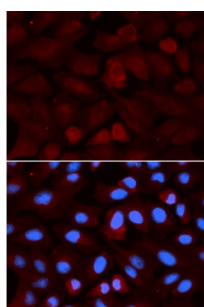
Abbexa Ltd, Innovation Centre, Cambridge Science Park, Cambridge, CB4 0EY, UK  
Telephone: +44 (0) 1223 755950 - Fax: +44 (0) 1223 755951 - E-Mail: [info@abbexa.com](mailto:info@abbexa.com)

## Aldehyde Dehydrogenase 3 Family Member A1 (ALDH3A1) Antibody

Catalogue No.: abx004217



Western blot analysis of extracts of various cell lines, using ALDH3A1 antibody (abx004217) at 1/1000 dilution.



Immunofluorescence analysis of U2OS cells using ALDH3A1 antibody (abx004217). Blue: DAPI for nuclear staining.

ALDH3A1 Antibody is a Rabbit Polyclonal antibody against ALDH3A1. Aldehyde dehydrogenases oxidize various aldehydes to the corresponding acids. They are involved in the detoxification of alcohol-derived acetaldehyde and in the metabolism of corticosteroids, biogenic amines, neurotransmitters, and lipid peroxidation. The enzyme encoded by this gene forms a cytoplasmic homodimer that preferentially oxidizes aromatic and medium-chain (6 carbons or more) saturated and unsaturated aldehyde substrates. It is thought to promote resistance to UV and 4-hydroxy-2-nonenal-induced oxidative damage in the cornea. The gene is located within the Smith-Magenis syndrome region on chromosome 17. Multiple alternatively spliced variants, encoding the same protein, have been identified.

**Target:** ALDH3A1

**Reactivity:** Human, Mouse

**Host:** Rabbit

**Clonality:** Polyclonal

**Tested Applications:** WB, IF/ICC

**Recommended dilutions:** WB: 1/500 - 1/2000, IF/ICC: 1/50 - 1/200. Optimal dilutions/concentrations should be determined by the end user.

**Immunogen:** Recombinant protein of human ALDH3A1.

**Purification:** Affinity purified.

Abbexa Ltd, Innovation Centre, Cambridge Science Park, Cambridge, CB4 0EY, UK  
Telephone: +44 (0) 1223 755950 - Fax: +44 (0) 1223 755951 - E-Mail: [info@abbexa.com](mailto:info@abbexa.com)

<b>Form:</b>	Liquid
<b>Isotype:</b>	IgG
<b>Conjugation:</b>	Unconjugated
<b>Storage:</b>	Aliquot and store at -20 °C. Avoid repeated freeze/thaw cycles.
<b>Molecular Weight:</b>	Calculated MW: 50 kDa Observed MW: 55 kDa
<b>Swiss Prot:</b>	<a href="#">P30838</a>
<b>GeneID:</b>	<a href="#">218</a>
<b>Gene Symbol:</b>	ALDH3A1
<b>Concentration:</b>	> 1 mg/ml
<b>Buffer:</b>	PBS, pH 7.3, 0.02% sodium azide, 50% glycerol.
<b>Note:</b>	This product is for research use only.