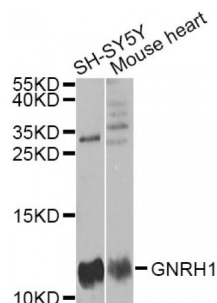


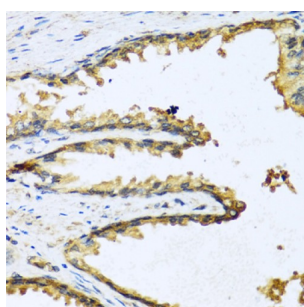
Abbexa Ltd, Innovation Centre, Cambridge Science Park, Cambridge, CB4 0EY, UK
Telephone: +44 (0) 1223 755950 - Fax: +44 (0) 1223 755951 - E-Mail: info@abbexa.com

Gonadotropin Releasing Hormone 1/LHRH (GNRH1) Antibody

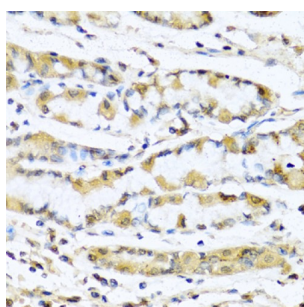
Catalogue No.: abx004300



Western blot analysis of extracts of various cell lines, using GNRH1 antibody (abx004300) at 1/1000 dilution.



Immunohistochemistry of paraffin-embedded human prostate using GNRH1 antibody (abx004300) at dilution of 1/100 (40x lens).



Immunohistochemistry of paraffin-embedded human stomach using GNRH1 antibody (abx004300) at dilution of 1/100 (40x lens).

GNRH1 Antibody is a Rabbit Polyclonal antibody against GNRH1. The protein encoded by this gene is secreted and then cleaved to form the 10 aa luteinizing hormone-releasing hormone (LHRH, also known as gonadoliberin-1), and prolactin release-inhibiting factor (also known as GnRH-associated peptide 1). LHRH stimulates the release of luteinizing and follicle stimulating hormones, which are important for reproduction. Mutation in this gene are associated with hypogonadotropic hypogonadism. Alternatively spliced transcript variants have been described for this gene.

Target:	GNRH1
Reactivity:	Human, Mouse
Host:	Rabbit
Clonality:	Polyclonal
Tested Applications:	WB, IHC

Abbexa Ltd, Innovation Centre, Cambridge Science Park, Cambridge, CB4 0EY, UK
Telephone: +44 (0) 1223 755950 - Fax: +44 (0) 1223 755951 - E-Mail: info@abbexa.com

Recommended dilutions: WB: 1/500 - 1/2000, IHC: 1/50 - 1/100. Optimal dilutions/concentrations should be determined by the end user.

Immunogen: Recombinant protein of human GNRH1.

Purification: Affinity purified.

Form: Liquid

Isotype: IgG

Conjugation: Unconjugated

Storage: Aliquot and store at -20 °C. Avoid repeated freeze/thaw cycles.

Molecular Weight: Calculated MW: 10 kDa
Observed MW: 12 kDa

Swiss Prot: [P01148](#)

GeneID: [2796](#)

Gene Symbol: GNRH1

Concentration: > 1 mg/ml

Buffer: PBS, pH 7.3, 0.02% sodium azide, 50% glycerol.

Note: This product is for research use only.