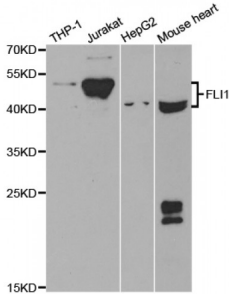


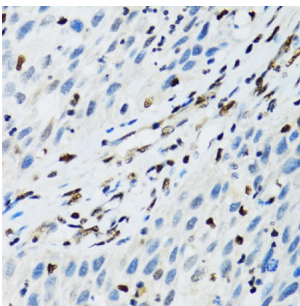
Abbexa Ltd, Innovation Centre, Cambridge Science Park, Cambridge, CB4 0EY, UK
 Telephone: +44 (0) 1223 755950 - Fax: +44 (0) 1223 755951 - E-Mail: info@abbexa.com

Friend Leukemia Virus Integration 1 (FLI1) Antibody

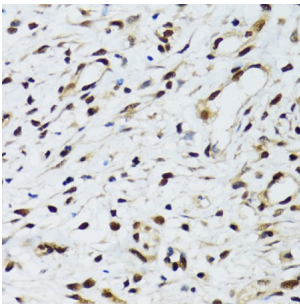
Catalogue No.: abx004315



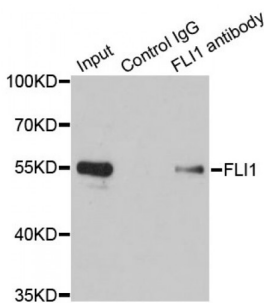
Western blot analysis of extracts of various cell lines, using FLI1 antibody (abx004315) at 1/1000 dilution.



Immunohistochemistry of paraffin-embedded human lung cancer using FLI1 antibody (abx004315) at dilution of 1/100 (40x lens).



Immunohistochemistry of paraffin-embedded human uterine cancer using FLI1 antibody (abx004315) at dilution of 1/100 (40x lens).



Immunoprecipitation analysis of 200 µg extracts of Jurkat cells using 1 µg FLI1 antibody (abx004315). Western blot was performed from the immunoprecipitate using FLI1 antibody (abx004315) at a dilution of 1/1000.

FLI1 Antibody is a Rabbit Polyclonal antibody against FLI1. This gene encodes a transcription factor containing an ETS DNA-binding domain. The gene can undergo a t(11;22)(q24;q12) translocation with the Ewing sarcoma gene on chromosome 22, which results in a fusion gene that is present in the majority of Ewing sarcoma cases. An acute lymphoblastic leukemia-associated t(4;11)(q21;q23) translocation involving this gene has also been identified. Alternative splicing results in multiple transcript variants.

Target: FLI1

Abbexa Ltd, Innovation Centre, Cambridge Science Park, Cambridge, CB4 0EY, UK
Telephone: +44 (0) 1223 755950 - Fax: +44 (0) 1223 755951 - E-Mail: info@abbexa.com

Reactivity:	Human, Mouse, Rat
Host:	Rabbit
Clonality:	Polyclonal
Tested Applications:	WB, IHC, IP
Recommended dilutions:	WB: 1/500 - 1/2000, IHC: 1/50 - 1/200, IP: 1/50 - 1/200. Optimal dilutions/concentrations should be determined by the end user.
Immunogen:	Recombinant protein of human FLI1.
Purification:	Affinity purified.
Form:	Liquid
Isotype:	IgG
Conjugation:	Unconjugated
Storage:	Aliquot and store at -20 °C. Avoid repeated freeze/thaw cycles.
Molecular Weight:	Calculated MW: 29 kDa/43 kDa/47 kDa/50 kDa Observed MW: 43 kDa
Swiss Prot:	Q01543
GeneID:	2313
Gene Symbol:	FLI1
Concentration:	> 1 mg/ml
Buffer:	PBS, pH 7.3, 0.02% sodium azide, 50% glycerol.
Note:	This product is for research use only.