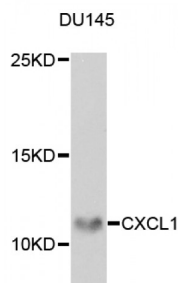


Abbexa Ltd, Innovation Centre, Cambridge Science Park, Cambridge, CB4 0EY, UK
Telephone: +44 (0) 1223 755950 - Fax: +44 (0) 1223 755951 - E-Mail: info@abbexa.com

Chemokine (C-X-C Motif) Ligand 1 (Melanoma Growth Stimulating Activity, Alpha) (CXCL1) Antibody

Catalogue No.: abx004445



Western blot analysis of extracts of DU145 cells, using CXCL1 antibody (abx004445) at 1/1000 dilution.

CXCL1 Antibody is a Rabbit Polyclonal antibody against CXCL1. This gene encodes a member of the CXC subfamily of chemokines. The encoded protein is a secreted growth factor that signal through the G-protein coupled receptor, CXC receptor 2. This protein plays a role in inflammation and as a chemoattractant for neutrophils. Aberrant expression this protein is associated with the growth and progression of certain tumors. A naturally occurring processed form of this protein has increased chemotactic activity. Alternate splicing results in coding and non-coding variants of this gene. A pseudogene of this gene is found on chromosome 4.

Target: CXCL1

Reactivity: Human

Host: Rabbit

Clonality: Polyclonal

Tested Applications: WB

Recommended dilutions: WB: 1/500 - 1/2000. Optimal dilutions/concentrations should be determined by the end user.

Immunogen: Recombinant protein of human CXCL1.

Purification: Affinity purified.

Form: Liquid

Isotype: IgG

Conjugation: Unconjugated

Storage: Aliquot and store at -20 °C. Avoid repeated freeze/thaw cycles.

Abbexa Ltd, Innovation Centre, Cambridge Science Park, Cambridge, CB4 0EY, UK
Telephone: +44 (0) 1223 755950 - Fax: +44 (0) 1223 755951 - E-Mail: info@abbexa.com

Molecular Weight: Calculated MW: 11 kDa
Observed MW: 11 kDa

Swiss Prot: [P09341](#)

GeneID: [2919](#)

Gene Symbol: CXCL1

Concentration: > 2.13 mg/ml

Buffer: PBS, pH 7.3, 0.02% sodium azide, 50% glycerol.

Note: This product is for research use only.