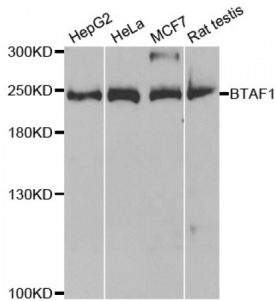


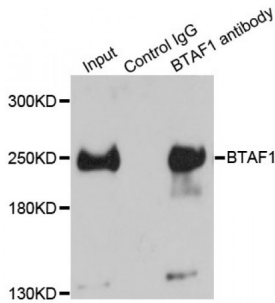
Abbexa Ltd, Innovation Centre, Cambridge Science Park, Cambridge, CB4 0EY, UK
 Telephone: +44 (0) 1223 755950 - Fax: +44 (0) 1223 755951 - E-Mail: info@abbexa.com

B-TFIID TATA-Box Binding Protein Associated Factor 1 (BTAF1) Antibody

Catalogue No.: abx004453



Western blot analysis of extracts of various cell lines, using BTAF1 antibody (abx004453) at 1/1000 dilution.



Immunoprecipitation analysis of 150 µg extracts of HeLa cells using 3 µg BTAF1 antibody (abx004453). Western blot was performed from the immunoprecipitate using BTAF1 antibody (abx004453) at a dilution of 1/500.

BTAF1 Antibody is a Rabbit Polyclonal antibody against BTAF1. This gene encodes a TAF (TATA box-binding protein-associated factor), which associates with TBP (TATA box-binding protein) to form the B-TFIID complex that is required for transcription initiation of genes by RNA polymerase II. This TAF has DNA-dependent ATPase activity, which drives the dissociation of TBP from DNA, freeing the TBP to associate with other TATA boxes or TATA-less promoters.

Target: BTAF1

Reactivity: Human, Mouse, Rat

Host: Rabbit

Clonality: Polyclonal

Tested Applications: WB, IHC, IP, ChIP

Recommended dilutions: WB: 1/500 - 1/2000, IHC: 1/50 - 1/200, IP: 1/20 - 1/50, ChIP: 1/20 - 1/100. Optimal dilutions/concentrations should be determined by the end user.

Immunogen: Recombinant protein of human BTAF1.

Purification: Affinity purified.

Form: Liquid

Abbexa Ltd, Innovation Centre, Cambridge Science Park, Cambridge, CB4 0EY, UK
Telephone: +44 (0) 1223 755950 - Fax: +44 (0) 1223 755951 - E-Mail: info@abbexa.com

Isotype:	IgG
Conjugation:	Unconjugated
Storage:	Aliquot and store at -20 °C. Avoid repeated freeze/thaw cycles.
Molecular Weight:	Calculated MW: 76 kDa/206 kDa Observed MW: 240 kDa
Swiss Prot:	O14981
GeneID:	9044
Gene Symbol:	BTAF1
Concentration:	> 1 mg/ml
Buffer:	PBS, pH 7.3, 0.02% sodium azide, 50% glycerol.
Note:	This product is for research use only.