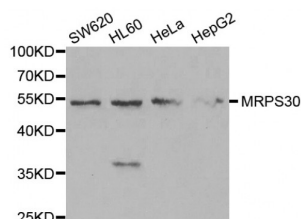


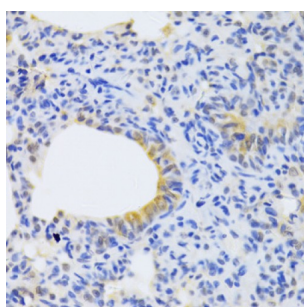
Abbexa Ltd, Innovation Centre, Cambridge Science Park, Cambridge, CB4 0EY, UK  
Telephone: +44 (0) 1223 755950 - Fax: +44 (0) 1223 755951 - E-Mail: info@abbexa.com

## Mitochondrial Ribosomal Protein S30 (MRPS30) Antibody

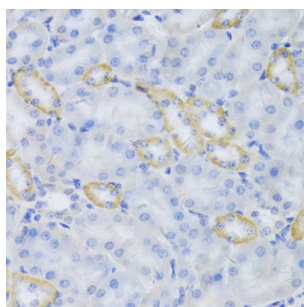
Catalogue No.: abx004479



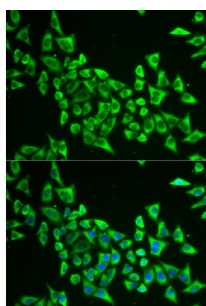
Western blot analysis of extracts of various cell lines, using MRPS30 antibody (abx004479) at 1/1000 dilution.



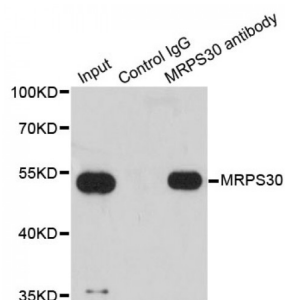
Immunohistochemistry of paraffin-embedded rat lung using MRPS30 Antibody (abx004479) at dilution of 1/100 (40x lens).



Immunohistochemistry of paraffin-embedded mouse kidney using MRPS30 Antibody (abx004479) at dilution of 1/100 (40x lens).



Immunofluorescence analysis of HeLa cells using MRPS30 antibody (abx004479). Blue: DAPI for nuclear staining.



Immunoprecipitation analysis of 200 µg extracts of HepG2 cells using 1 µg MRPS30 antibody (abx004479). Western blot was performed from the immunoprecipitate using MRPS30 antibody (abx004479) at a dilution of 1/1000.

MRPS30 Antibody is a Rabbit Polyclonal antibody against MRPS30. Mammalian mitochondrial ribosomal proteins are encoded

by nuclear genes and help in protein synthesis within the mitochondrion. Mitochondrial ribosomes (mitoribosomes) consist of a small 28S subunit and a large 39S subunit. They have an estimated 75% protein to rRNA composition compared to prokaryotic ribosomes, where this ratio is reversed. Another difference between mammalian mitoribosomes and prokaryotic ribosomes is that the latter contain a 5S rRNA. Among different species, the proteins comprising the mitoribosome differ greatly in sequence, and sometimes in biochemical properties, which prevents easy recognition by sequence homology. This gene encodes a 28S subunit protein that is similar to the chicken pro-apoptotic protein p52. Transcript variants using alternative promoters or polyA sites have been mentioned in the literature but the complete description of these sequences is not available.

<b>Target:</b>	MRPS30
<b>Reactivity:</b>	Human, Mouse, Rat
<b>Host:</b>	Rabbit
<b>Clonality:</b>	Polyclonal
<b>Tested Applications:</b>	WB, IHC, IF/ICC, IP
<b>Recommended dilutions:</b>	WB: 1/500 - 1/2000, IHC: 1/50 - 1/200, IF/ICC: 1/50 - 1/100, IP: 1/50 - 1/200. Optimal dilutions/concentrations should be determined by the end user.
<b>Immunogen:</b>	Recombinant protein of human MRPS30.
<b>Purification:</b>	Affinity purified.
<b>Form:</b>	Liquid
<b>Isotype:</b>	IgG
<b>Conjugation:</b>	Unconjugated
<b>Storage:</b>	Aliquot and store at -20 °C. Avoid repeated freeze/thaw cycles.
<b>Molecular Weight:</b>	Calculated MW: 50 kDa Observed MW: 54 kDa
<b>Swiss Prot:</b>	<a href="#">Q9NP92</a>
<b>GeneID:</b>	<a href="#">10884</a>
<b>Gene Symbol:</b>	MRPS30
<b>Concentration:</b>	> 1 mg/ml
<b>Buffer:</b>	PBS, pH 7.3, 0.02% sodium azide, 50% glycerol.

**Note:** This product is for research use only.