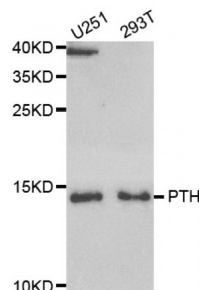


Abbexa Ltd, Innovation Centre, Cambridge Science Park, Cambridge, CB4 0EY, UK  
Telephone: +44 (0) 1223 755950 - Fax: +44 (0) 1223 755951 - E-Mail: [info@abbexa.com](mailto:info@abbexa.com)

## Parathyroid Hormone (PTH) Antibody

Catalogue No.: abx004483



Western blot analysis of extracts of various cell lines, using PTH antibody (abx004483) at 1/1000 dilution.

PTH Antibody is a Rabbit Polyclonal antibody against PTH. The protein encoded by this gene is a hormone secreted by parathyroid cells. This hormone elevates blood  $\text{Ca}^{2+}$  level by dissolving the salts in bone and preventing their renal excretion. Defects in this gene are a cause of familial isolated hypoparathyroidism (FIH).

<b>Target:</b>	PTH
<b>Reactivity:</b>	Human
<b>Host:</b>	Rabbit
<b>Clonality:</b>	Polyclonal
<b>Tested Applications:</b>	WB, IF/ICC
<b>Recommended dilutions:</b>	WB: 1/500 - 1/2000, IF/ICC: 1/10 - 1/100. Optimal dilutions/concentrations should be determined by the end user.
<b>Immunogen:</b>	Recombinant protein of human PTH.
<b>Purification:</b>	Affinity purified.
<b>Form:</b>	Liquid
<b>Isotype:</b>	IgG
<b>Conjugation:</b>	Unconjugated
<b>Storage:</b>	Aliquot and store at $-20^{\circ}\text{C}$ . Avoid repeated freeze/thaw cycles.
<b>Molecular Weight:</b>	Calculated MW: 12 kDa Observed MW: 14 kDa
<b>Swiss Prot:</b>	<a href="#">P01270</a>

Abbexa Ltd, Innovation Centre, Cambridge Science Park, Cambridge, CB4 0EY, UK  
Telephone: +44 (0) 1223 755950 - Fax: +44 (0) 1223 755951 - E-Mail: [info@abbexa.com](mailto:info@abbexa.com)

**GeneID:** [5741](#)

**Gene Symbol:** PTH

**Concentration:** > 1 mg/ml

**Buffer:** PBS, pH 7.3, 0.02% sodium azide, 50% glycerol.

**Note:** This product is for research use only.