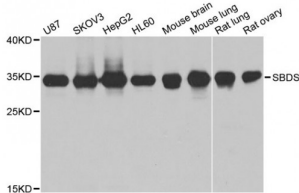


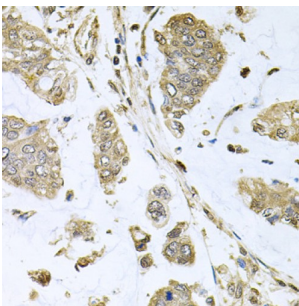
Abbexa Ltd, Innovation Centre, Cambridge Science Park, Cambridge, CB4 0EY, UK  
 Telephone: +44 (0) 1223 755950 - Fax: +44 (0) 1223 755951 - E-Mail: info@abbexa.com

## Ribosome Maturation Protein SBDS (SBDS) Antibody

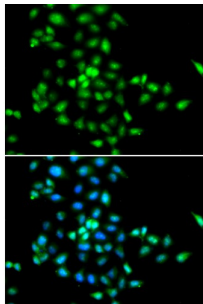
Catalogue No.: abx004508



Western blot analysis of extracts of various cell lines, using SBDS antibody (abx004508) at 1/1000 dilution.



Immunohistochemistry of paraffin-embedded human gastric cancer using SBDS antibody (abx004508) at dilution of 1/100 (40x lens).



Immunofluorescence analysis of MCF-7 cells using SBDS antibody (abx004508). Blue: DAPI for nuclear staining.

SBDS Antibody is a Rabbit Polyclonal antibody against SBDS. This gene encodes a member of a highly conserved protein family that exists from archaea to vertebrates and plants. The encoded protein may function in RNA metabolism. Mutations within this gene are associated with Shwachman-Bodian-Diamond syndrome. An alternative transcript has been described, but its biological nature has not been determined. This gene has a closely linked pseudogene that is distally located.

<b>Target:</b>	SBDS
<b>Reactivity:</b>	Human, Mouse, Rat
<b>Host:</b>	Rabbit
<b>Clonality:</b>	Polyclonal
<b>Tested Applications:</b>	WB, IHC, IF/ICC

Abbexa Ltd, Innovation Centre, Cambridge Science Park, Cambridge, CB4 0EY, UK  
Telephone: +44 (0) 1223 755950 - Fax: +44 (0) 1223 755951 - E-Mail: [info@abbexa.com](mailto:info@abbexa.com)

**Recommended dilutions:** WB: 1/500 - 1/2000, IHC: 1/50 - 1/100, IF/ICC: 1/50 - 1/200. Optimal dilutions/concentrations should be determined by the end user.

**Immunogen:** Recombinant protein of human SBDS.

**Purification:** Affinity purified.

**Form:** Liquid

**Isotype:** IgG

**Conjugation:** Unconjugated

**Storage:** Aliquot and store at -20 °C. Avoid repeated freeze/thaw cycles.

**Molecular Weight:** Calculated MW: 28 kDa  
Observed MW: 34 kDa

**Swiss Prot:** [Q9Y3A5](#)

**GeneID:** [51119](#)

**Gene Symbol:** SBDS

**Concentration:** > 1 mg/ml

**Buffer:** PBS, pH 7.3, 0.02% sodium azide, 50% glycerol.

**Note:** This product is for research use only.