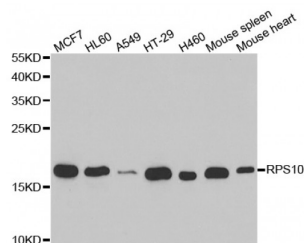


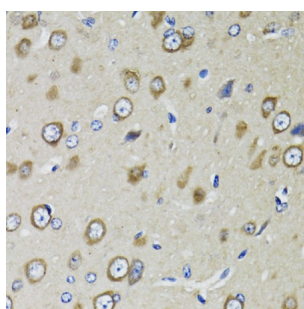
Abbexa Ltd, Innovation Centre, Cambridge Science Park, Cambridge, CB4 0EY, UK
Telephone: +44 (0) 1223 755950 - Fax: +44 (0) 1223 755951 - E-Mail: info@abbexa.com

Ribosomal Protein S10 (RPS10) Antibody

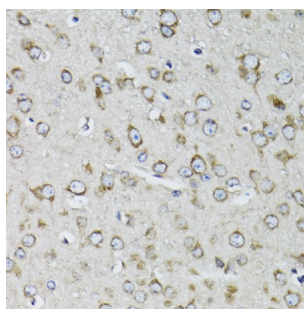
Catalogue No.: abx004511



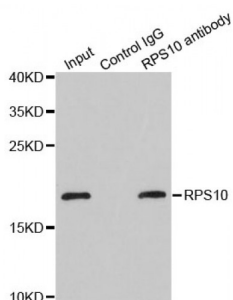
Western blot analysis of extracts of various cell lines, using RPS10 antibody (abx004511) at 1/1000 dilution.



Immunohistochemistry of paraffin-embedded rat brain using RPS10 antibody (abx004511) at dilution of 1/100 (40x lens).



Immunohistochemistry of paraffin-embedded mouse brain using RPS10 antibody (abx004511) at dilution of 1/100 (40x lens).



Immunoprecipitation analysis of 200 µg extracts of MCF-7 cells using 1 µg RPS10 antibody (abx004511). Western blot was performed from the immunoprecipitate using RPS10 antibody (abx004511) at a dilution of 1/1000.

RPS10 Antibody is a Rabbit Polyclonal antibody against RPS10. Ribosomes, the organelles that catalyze protein synthesis, consist of a small 40S subunit and a large 60S subunit. Together these subunits are composed of 4 RNA species and approximately 80 structurally distinct proteins. This gene encodes a ribosomal protein that is a component of the 40S subunit. The protein belongs to the S10E family of ribosomal proteins. It is located in the cytoplasm. Variable expression of this gene in colorectal cancers compared to adjacent normal tissues has been observed, although no correlation between the level of expression and the severity of the disease has been found. As is typical for genes encoding ribosomal proteins, there are multiple processed pseudogenes of this gene dispersed through the genome. Alternate splicing results in multiple transcript variants that encode the same protein. Naturally occurring read-through transcription occurs between this locus and the neighboring locus NUDT3 (nudix (nucleoside diphosphate linked moiety X)-type motif 3).

Abbexa Ltd, Innovation Centre, Cambridge Science Park, Cambridge, CB4 0EY, UK
Telephone: +44 (0) 1223 755950 - Fax: +44 (0) 1223 755951 - E-Mail: info@abbexa.com

Target:	RPS10
Reactivity:	Human, Mouse, Rat
Host:	Rabbit
Clonality:	Polyclonal
Tested Applications:	WB, IHC, IF/ICC, IP
Recommended dilutions:	WB: 1/500 - 1/2000, IHC: 1/50 - 1/200, IF/ICC: 1/20 - 1/50, IP: 1/20 - 1/50. Optimal dilutions/concentrations should be determined by the end user.
Immunogen:	Recombinant protein of human RPS10.
Purification:	Affinity purified.
Form:	Liquid
Isotype:	IgG
Conjugation:	Unconjugated
Storage:	Aliquot and store at -20 °C. Avoid repeated freeze/thaw cycles.
Molecular Weight:	Calculated MW: 18 kDa Observed MW: 19 kDa
Swiss Prot:	P46783
GeneID:	6204
Gene Symbol:	RPS10
Concentration:	> 1 mg/ml
Buffer:	PBS, pH 7.3, 0.02% sodium azide, 50% glycerol.
Note:	This product is for research use only.