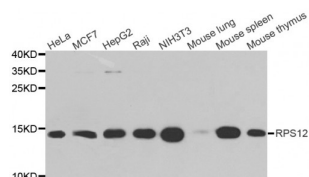


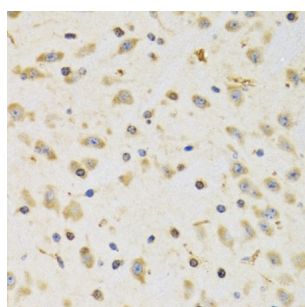
Abbexa Ltd, Innovation Centre, Cambridge Science Park, Cambridge, CB4 0EY, UK
Telephone: +44 (0) 1223 755950 - Fax: +44 (0) 1223 755951 - E-Mail: info@abbexa.com

Ribosomal Protein S12 (RPS12) Antibody

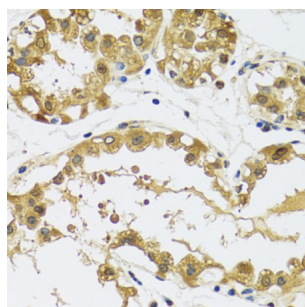
Catalogue No.: abx004517



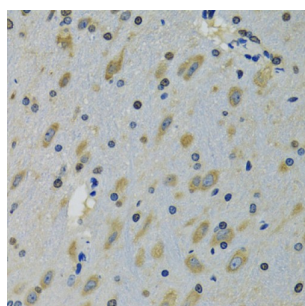
Western blot analysis of extracts of various cell lines, using RPS12 antibody (abx004517) at 1/1000 dilution.



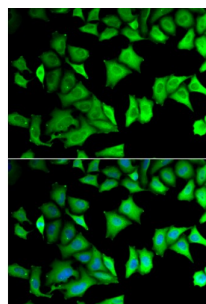
Immunohistochemistry of paraffin-embedded rat brain using RPS12 antibody (abx004517) at dilution of 1/100 (40x lens).



Immunohistochemistry of paraffin-embedded human breast using RPS12 antibody (abx004517) at dilution of 1/100 (40x lens).



Immunohistochemistry of paraffin-embedded mouse brain using RPS12 antibody (abx004517) at dilution of 1/100 (40x lens).



Immunofluorescence analysis of MCF-7 cells using RPS12 antibody (abx004517). Blue: DAPI for nuclear staining.

RPS12 Antibody is a Rabbit Polyclonal antibody against RPS12. Ribosomes, the organelles that catalyze protein synthesis,

Abbexa Ltd, Innovation Centre, Cambridge Science Park, Cambridge, CB4 0EY, UK
Telephone: +44 (0) 1223 755950 - Fax: +44 (0) 1223 755951 - E-Mail: info@abbexa.com

consist of a small 40S subunit and a large 60S subunit. Together these subunits are composed of 4 RNA species and approximately 80 structurally distinct proteins. This gene encodes a ribosomal protein that is a component of the 40S subunit. The protein belongs to the S12E family of ribosomal proteins. It is located in the cytoplasm. Increased expression of this gene in colorectal cancers compared to matched normal colonic mucosa has been observed. As is typical for genes encoding ribosomal proteins, there are multiple processed pseudogenes of this gene dispersed through the genome.

Target: RPS12

Reactivity: Human, Mouse, Rat

Host: Rabbit

Clonality: Polyclonal

Tested Applications: WB, IHC, IF/ICC

Recommended dilutions: WB: 1/500 - 1/2000, IHC: 1/50 - 1/200, IF/ICC: 1/10 - 1/100. Optimal dilutions/concentrations should be determined by the end user.

Immunogen: Recombinant protein of human RPS12.

Purification: Affinity purified.

Form: Liquid

Isotype: IgG

Conjugation: Unconjugated

Storage: Aliquot and store at -20 °C. Avoid repeated freeze/thaw cycles.

Molecular Weight: Calculated MW: 14 kDa
Observed MW: 15 kDa

Swiss Prot: [P25398](#)

GeneID: [6206](#)

Gene Symbol: RPS12

Concentration: > 1 mg/ml

Buffer: PBS, pH 7.3, 0.02% sodium azide, 50% glycerol.

Note: This product is for research use only.