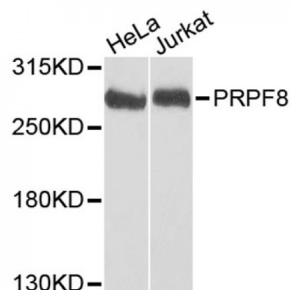


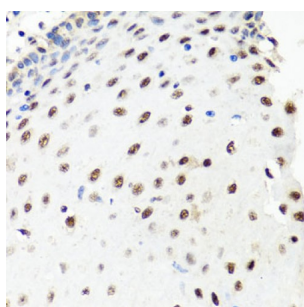
Abbexa Ltd, Innovation Centre, Cambridge Science Park, Cambridge, CB4 0EY, UK
Telephone: +44 (0) 1223 755950 - Fax: +44 (0) 1223 755951 - E-Mail: info@abbexa.com

Pre-mRNA Processing Factor 8 (PRPF8) Antibody

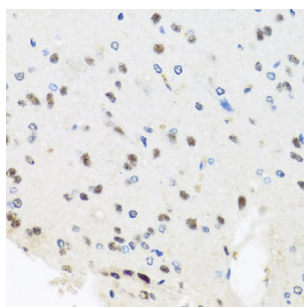
Catalogue No.: abx004657



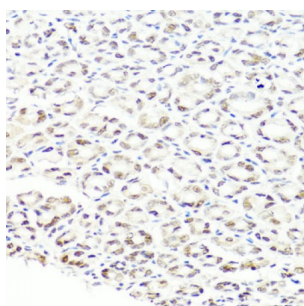
Western blot analysis of extracts of various cell lines, using PRPF8 antibody (abx004657) at 1/1000 dilution.



Immunohistochemistry of paraffin-embedded human esophagus using PRPF8 antibody (abx004657) at dilution of 1/100 (40x lens).



Immunohistochemistry of paraffin-embedded rat brain using PRPF8 antibody (abx004657) at dilution of 1/100 (40x lens).



Immunohistochemistry of paraffin-embedded mouse stomach using PRPF8 antibody (abx004657) at dilution of 1/100 (40x lens).

PRPF8 Antibody is a Rabbit Polyclonal antibody against PRPF8. Pre-mRNA splicing occurs in 2 sequential transesterification steps. The protein encoded by this gene is a component of both U2- and U12-dependent spliceosomes, and found to be essential for the catalytic step II in pre-mRNA splicing process. It contains several WD repeats, which function in protein-protein interactions. This protein has a sequence similarity to yeast Prp8 protein. This gene is a candidate gene for autosomal dominant retinitis pigmentosa.

Target: PRPF8

Abbexa Ltd, Innovation Centre, Cambridge Science Park, Cambridge, CB4 0EY, UK
Telephone: +44 (0) 1223 755950 - Fax: +44 (0) 1223 755951 - E-Mail: info@abbexa.com

Reactivity: Human, Mouse, Rat

Host: Rabbit

Clonality: Polyclonal

Tested Applications: WB, IHC

Recommended dilutions: WB: 1/500 - 1/1000, IHC: 1/50 - 1/100. Optimal dilutions/concentrations should be determined by the end user.

Immunogen: Recombinant protein of human PRPF8.

Purification: Affinity purified.

Form: Liquid

Isotype: IgG

Conjugation: Unconjugated

Storage: Aliquot and store at -20 °C. Avoid repeated freeze/thaw cycles.

Molecular Weight: Calculated MW: 273 kDa
Observed MW: 274 kDa

Swiss Prot: [Q6P2Q9](#)

GeneID: [10594](#)

Gene Symbol: PRPF8

Concentration: > 1 mg/ml

Buffer: PBS, pH 7.3, 0.02% sodium azide, 50% glycerol.

Note: This product is for research use only.