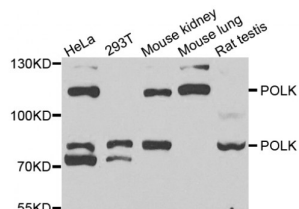


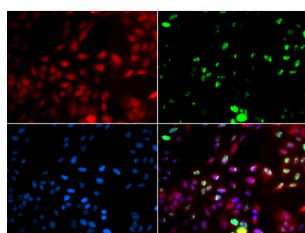
Abbexa Ltd, Innovation Centre, Cambridge Science Park, Cambridge, CB4 0EY, UK  
Telephone: +44 (0) 1223 755950 - Fax: +44 (0) 1223 755951 - E-Mail: [info@abbexa.com](mailto:info@abbexa.com)

## DNA Polymerase Kappa (POLK) Antibody

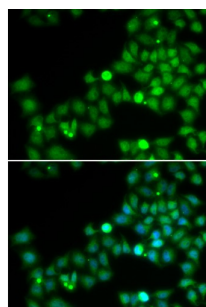
Catalogue No.: abx004686



Western blot analysis of extracts of various cell lines, using POLK antibody (abx004686) at 1/1000 dilution.



Immunofluorescence analysis of GFP-RNF168 transgenic U2OS cells using POLK antibody (abx004686). Green  $\square$  GFP-RNF168 fusion protein expression for DNA damage marker. Blue: DAPI for nuclear staining. RNF168(GFP) can be used to mark cells damaged by UV-A laser for they always gather around DNA damage region.



Immunofluorescence analysis of U2OS cells using POLK antibody (abx004686). Blue: DAPI for nuclear staining.

POLK Antibody is a Rabbit Polyclonal antibody against POLK. External and internal DNA-damaging agents continually threaten the integrity of genetic material in cells. Although a variety of repair mechanisms exist to remove the resulting lesions, some lesions escape repair and block the replication machinery. Members of the Y family of DNA polymerases, such as POLK, permit the continuity of the replication fork by allowing replication through such DNA lesions. Each Y family polymerase has a unique DNA-damage bypass and fidelity profile. POLK is specialized for the extension step of lesion bypass (summary by Lone et al., 2007).

<b>Target:</b>	POLK
<b>Reactivity:</b>	Human, Mouse, Rat
<b>Host:</b>	Rabbit
<b>Clonality:</b>	Polyclonal
<b>Tested Applications:</b>	WB, IF/ICC

Abbexa Ltd, Innovation Centre, Cambridge Science Park, Cambridge, CB4 0EY, UK  
Telephone: +44 (0) 1223 755950 - Fax: +44 (0) 1223 755951 - E-Mail: [info@abbexa.com](mailto:info@abbexa.com)

**Recommended dilutions:** WB: 1/500 - 1/2000, IF/ICC: 1/50 - 1/200. Optimal dilutions/concentrations should be determined by the end user.

**Immunogen:** Recombinant protein of human POLK.

**Purification:** Affinity purified.

**Form:** Liquid

**Isotype:** IgG

**Conjugation:** Unconjugated

**Storage:** Aliquot and store at -20 °C. Avoid repeated freeze/thaw cycles.

**Molecular Weight:** Calculated MW: 42 kDa/52 kDa/54 kDa/55 kDa/76 kDa/88 kDa/98 kDa  
Observed MW: 80 kDa, 110 kDa

**Swiss Prot:** [Q9UBT6](#)

**GeneID:** [51426](#)

**Gene Symbol:** POLK

**Concentration:** > 1 mg/ml

**Buffer:** PBS, pH 7.3, 0.02% sodium azide, 50% glycerol.

**Note:** This product is for research use only.