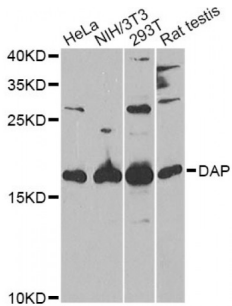


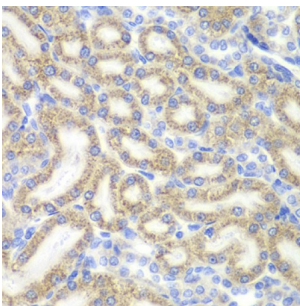
Abbexa Ltd, Innovation Centre, Cambridge Science Park, Cambridge, CB4 0EY, UK  
 Telephone: +44 (0) 1223 755950 - Fax: +44 (0) 1223 755951 - E-Mail: info@abbexa.com

## Death Associated Protein (DAP) Antibody

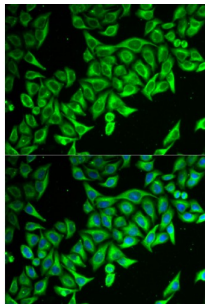
Catalogue No.: abx004705



Western blot analysis of extracts of various cell lines, using DAP Antibody (abx004705) at 1/1000 dilution.



Immunohistochemistry of paraffin-embedded rat kidney using DAP antibody (abx004705) at dilution of 1/200 (40x lens).



Immunofluorescence analysis of MCF-7 cells using DAP antibody (abx004705). Blue: DAPI for nuclear staining.

DAP Antibody is a Rabbit Polyclonal antibody against DAP. This gene encodes a basic, proline-rich, 15-kD protein. The protein acts as a positive mediator of programmed cell death that is induced by interferon-gamma. Alternatively spliced transcript variants encoding distinct isoforms have been found for this gene.

<b>Target:</b>	DAP
<b>Reactivity:</b>	Human, Mouse, Rat
<b>Host:</b>	Rabbit
<b>Clonality:</b>	Polyclonal
<b>Tested Applications:</b>	WB, IHC, IF/ICC

**Recommended dilutions:** WB: 1/500 - 1/2000, IHC: 1/50 - 1/200, IF/ICC: 1/20 - 1/100. Optimal dilutions/concentrations should be determined by the end user.

Abbexa Ltd, Innovation Centre, Cambridge Science Park, Cambridge, CB4 0EY, UK  
Telephone: +44 (0) 1223 755950 - Fax: +44 (0) 1223 755951 - E-Mail: [info@abbexa.com](mailto:info@abbexa.com)

<b>Immunogen:</b>	Recombinant protein of human DAP.
<b>Purification:</b>	Affinity purified.
<b>Form:</b>	Liquid
<b>Isotype:</b>	IgG
<b>Conjugation:</b>	Unconjugated
<b>Storage:</b>	Aliquot and store at -20 °C. Avoid repeated freeze/thaw cycles.
<b>Molecular Weight:</b>	Calculated MW: 11 kDa Observed MW: 15 kDa
<b>Swiss Prot:</b>	<a href="#">P51397</a>
<b>GeneID:</b>	<a href="#">1611</a>
<b>Gene Symbol:</b>	DAP
<b>Concentration:</b>	> 1 mg/ml
<b>Buffer:</b>	PBS, pH 7.3, 0.02% sodium azide, 50% glycerol.
<b>Note:</b>	This product is for research use only.