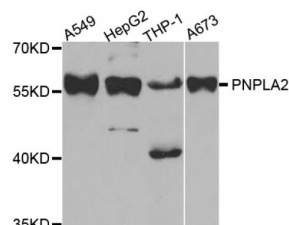


Abbexa Ltd, Innovation Centre, Cambridge Science Park, Cambridge, CB4 0EY, UK
Telephone: +44 (0) 1223 755950 - Fax: +44 (0) 1223 755951 - E-Mail: info@abbexa.com

Patatin-Like Phospholipase Domain-Containing Protein 2 (PNPLA2) Antibody

Catalogue No.: abx004767



Western blot analysis of extracts of various cell lines, using PNPLA2 antibody (abx004767) at 1/1000 dilution.

PNPLA2 Antibody is a Rabbit Polyclonal antibody against PNPLA2. This gene encodes an enzyme which catalyzes the first step in the hydrolysis of triglycerides in adipose tissue. Mutations in this gene are associated with neutral lipid storage disease with myopathy.

Target: PNPLA2

Reactivity: Human, Mouse, Rat

Host: Rabbit

Clonality: Polyclonal

Tested Applications: WB

Recommended dilutions: WB: 1/500 - 1/2000. Optimal dilutions/concentrations should be determined by the end user.

Immunogen: Recombinant protein of human PNPLA2.

Purification: Affinity purified.

Form: Liquid

Isotype: IgG

Conjugation: Unconjugated

Storage: Aliquot and store at -20 °C. Avoid repeated freeze/thaw cycles.

Molecular Weight: Calculated MW: 19 kDa/55 kDa
Observed MW: 58 kDa

Swiss Prot: [Q96AD5](#)

GeneID: [57104](#)

Gene Symbol: PNPLA2

Concentration: > 1 mg/ml

Buffer: PBS, pH 7.3, 0.02% sodium azide, 50% glycerol.

Note: This product is for research use only.