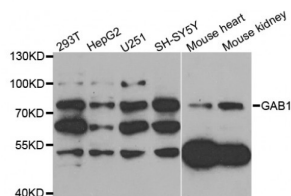


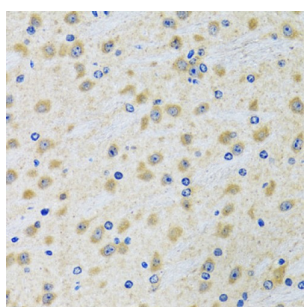
Abbexa Ltd, Innovation Centre, Cambridge Science Park, Cambridge, CB4 0EY, UK
 Telephone: +44 (0) 1223 755950 - Fax: +44 (0) 1223 755951 - E-Mail: info@abbexa.com

GRB2-Associated-Binding Protein 1 (GAB1) Antibody

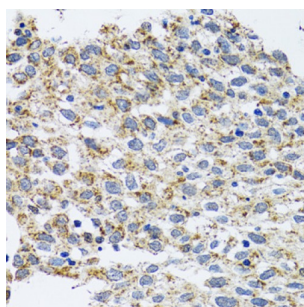
Catalogue No.: abx004770



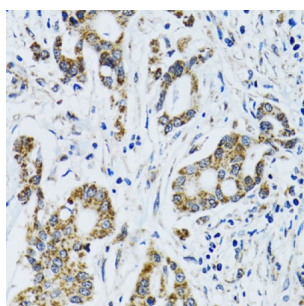
Western blot analysis of extracts of various cell lines, using GAB1 antibody (abx004770) at 1/1000 dilution.



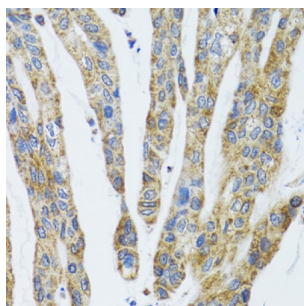
Immunohistochemistry of paraffin-embedded rat brain using GAB1 antibody (abx004770) at dilution of 1/100 (40x lens).



Immunohistochemistry of paraffin-embedded human lung cancer using GAB1 antibody (abx004770) at dilution of 1/100 (40x lens).

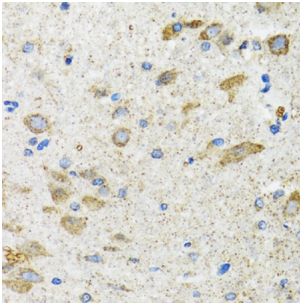


Immunohistochemistry of paraffin-embedded human colon carcinoma using GAB1 antibody (abx004770) at dilution of 1/100 (40x lens).

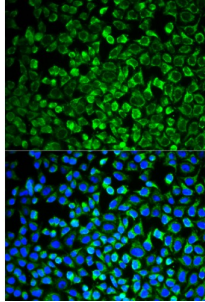


Immunohistochemistry of paraffin-embedded human gastric cancer using GAB1 antibody (abx004770) at dilution of 1/100 (40x lens).

Abbexa Ltd, Innovation Centre, Cambridge Science Park, Cambridge, CB4 0EY, UK
Telephone: +44 (0) 1223 755950 - Fax: +44 (0) 1223 755951 - E-Mail: info@abbexa.com



Immunohistochemistry of paraffin-embedded mouse spinal cord using GAB1 antibody (abx004770) at dilution of 1/100 (40x lens).



Immunofluorescence analysis of MCF-7 cells using GAB1 antibody (abx004770). Blue: DAPI for nuclear staining.

GAB1 Antibody is a Rabbit Polyclonal antibody against GAB1. The protein encoded by this gene is a member of the IRS1-like multisubstrate docking protein family. It is an important mediator of branching tubulogenesis and plays a central role in cellular growth response, transformation and apoptosis. Two transcript variants encoding different isoforms have been found for this gene.

Target: GAB1

Reactivity: Human, Mouse, Rat

Host: Rabbit

Clonality: Polyclonal

Tested Applications: WB, IHC, IF/ICC

Recommended dilutions: WB: 1/500 - 1/2000, IHC: 1/50 - 1/200, IF/ICC: 1/20 - 1/100. Optimal dilutions/concentrations should be determined by the end user.

Immunogen: Recombinant protein of human GAB1.

Purification: Affinity purified.

Form: Liquid

Isotype: IgG

Conjugation: Unconjugated

Abbexa Ltd, Innovation Centre, Cambridge Science Park, Cambridge, CB4 0EY, UK
Telephone: +44 (0) 1223 755950 - Fax: +44 (0) 1223 755951 - E-Mail: info@abbexa.com

Storage: Aliquot and store at -20 °C. Avoid repeated freeze/thaw cycles.

Molecular Weight: Calculated MW: 76 kDa/80 kDa
Observed MW: 80 kDa

Swiss Prot: [Q13480](#)

GeneID: [2549](#)

Gene Symbol: GAB1

Concentration: > 1 mg/ml

Buffer: PBS, pH 7.3, 0.02% sodium azide, 50% glycerol.

Note: This product is for research use only.