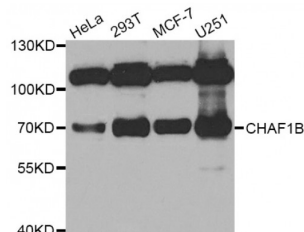


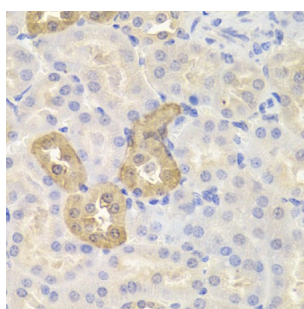
Abbexa Ltd, Innovation Centre, Cambridge Science Park, Cambridge, CB4 0EY, UK
Telephone: +44 (0) 1223 755950 - Fax: +44 (0) 1223 755951 - E-Mail: info@abbexa.com

Chromatin Assembly Factor 1, Subunit B (CHAF1B) Antibody

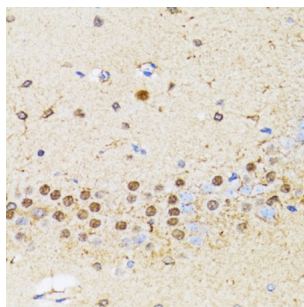
Catalogue No.: abx004781



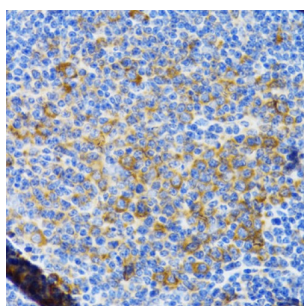
Western blot analysis of extracts of various cell lines, using CHAF1B antibody (abx004781) at 1/1000 dilution.



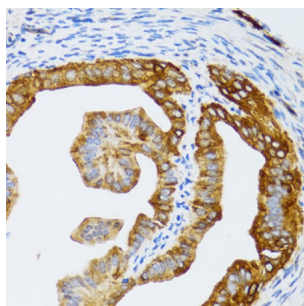
Immunohistochemistry of paraffin-embedded mouse kidney using CHAF1B antibody (abx004781) at dilution of 1/200 (40x lens).



Immunohistochemistry of paraffin-embedded rat brain using CHAF1B antibody (abx004781) at dilution of 1/100 (40x lens).

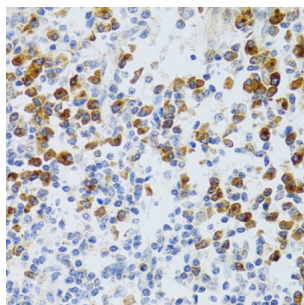


Immunohistochemistry of paraffin-embedded rat spleen using CHAF1B antibody (abx004781) at dilution of 1/100 (40x lens).

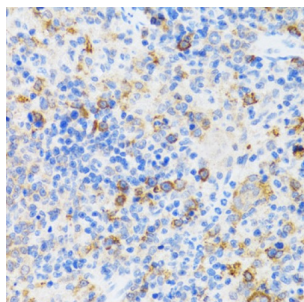


Immunohistochemistry of paraffin-embedded rat fallopian tube using CHAF1B antibody (abx004781) at dilution of 1/100 (40x lens).

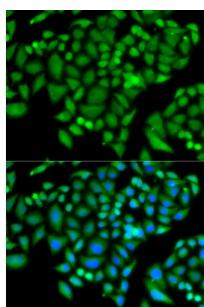
Abbexa Ltd, Innovation Centre, Cambridge Science Park, Cambridge, CB4 0EY, UK
Telephone: +44 (0) 1223 755950 - Fax: +44 (0) 1223 755951 - E-Mail: info@abbexa.com



Immunohistochemistry of paraffin-embedded human tonsil using CHAF1B antibody (abx004781) at dilution of 1/100 (40x lens).



Immunohistochemistry of paraffin-embedded mouse spleen using CHAF1B antibody (abx004781) at dilution of 1/100 (40x lens).



Immunofluorescence analysis of MCF-7 cells using CHAF1B antibody (abx004781). Blue: DAPI for nuclear staining.

CHAF1B Antibody is a Rabbit Polyclonal antibody against CHAF1B. Chromatin assembly factor I (CAF-I) is required for the assembly of histone octamers onto newly-replicated DNA. CAF-I is composed of three protein subunits, p50, p60, and p150. The protein encoded by this gene corresponds to the p60 subunit and is required for chromatin assembly after replication. The encoded protein is differentially phosphorylated in a cell cycle-dependent manner. In addition, it is normally found in the nucleus except during mitosis, when it is released into the cytoplasm. This protein is a member of the WD-repeat HIR1 family and may also be involved in DNA repair.

Target:	CHAF1B
Reactivity:	Human, Mouse, Rat
Host:	Rabbit
Clonality:	Polyclonal
Tested Applications:	WB, IHC, IF/ICC

Recommended dilutions: WB: 1/500 - 1/2000, IHC: 1/50 - 1/200, IF/ICC: 1/20 - 1/100. Optimal dilutions/concentrations should be determined by the end user.

Abbexa Ltd, Innovation Centre, Cambridge Science Park, Cambridge, CB4 0EY, UK
Telephone: +44 (0) 1223 755950 - Fax: +44 (0) 1223 755951 - E-Mail: info@abbexa.com

Immunogen:	Recombinant protein of human CHAF1B.
Purification:	Affinity purified.
Form:	Liquid
Isotype:	IgG
Conjugation:	Unconjugated
Storage:	Aliquot and store at -20 °C. Avoid repeated freeze/thaw cycles.
Molecular Weight:	Calculated MW: 61 kDa Observed MW: 70 kDa
Swiss Prot:	Q13112
GeneID:	8208
Gene Symbol:	CHAF1B
Concentration:	> 1 mg/ml
Buffer:	PBS, pH 7.3, 0.02% sodium azide, 50% glycerol.
Note:	This product is for research use only.