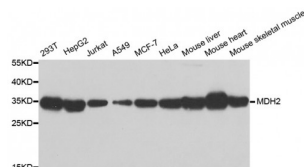


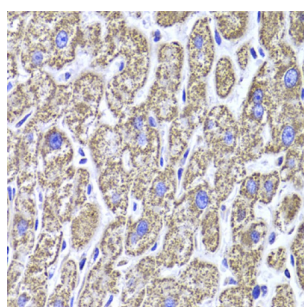
Abbexa Ltd, Innovation Centre, Cambridge Science Park, Cambridge, CB4 0EY, UK
Telephone: +44 (0) 1223 755950 - Fax: +44 (0) 1223 755951 - E-Mail: info@abbexa.com

Malate Dehydrogenase 2 (MDH2) Antibody

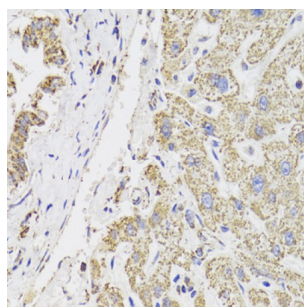
Catalogue No.: abx004812



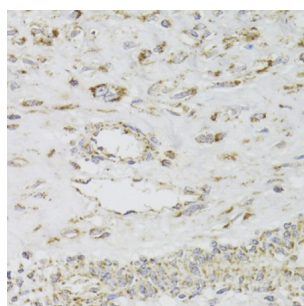
Western blot analysis of extracts of various cell lines, using MDH2 antibody (abx004812) at 1/1000 dilution.



Immunohistochemistry of paraffin-embedded human liver injury using MDH2 Antibody (abx004812) at dilution of 1/100 (40x lens).



Immunohistochemistry of paraffin-embedded human liver injury using MDH2 Antibody (abx004812) at dilution of 1/100 (40x lens).



Immunohistochemistry of paraffin-embedded human leiomyoma of uterus using MDH2 Antibody (abx004812) at dilution of 1/100 (40x lens).

MDH2 Antibody is a Rabbit Polyclonal antibody against MDH2. Malate dehydrogenase catalyzes the reversible oxidation of malate to oxaloacetate, utilizing the NAD/NADH cofactor system in the citric acid cycle. The protein encoded by this gene is localized to the mitochondria and may play pivotal roles in the malate-aspartate shuttle that operates in the metabolic coordination between cytosol and mitochondria. Several transcript variants encoding different isoforms have been found for this gene.

Target: MDH2

Abbexa Ltd, Innovation Centre, Cambridge Science Park, Cambridge, CB4 0EY, UK
Telephone: +44 (0) 1223 755950 - Fax: +44 (0) 1223 755951 - E-Mail: info@abbexa.com

Reactivity: Human, Mouse

Host: Rabbit

Clonality: Polyclonal

Tested Applications: WB, IHC

Recommended dilutions: WB: 1/500 - 1/2000, IHC: 1/50 - 1/200. Optimal dilutions/concentrations should be determined by the end user.

Immunogen: Recombinant protein of human MDH2.

Purification: Affinity purified.

Form: Liquid

Isotype: IgG

Conjugation: Unconjugated

Storage: Aliquot and store at -20 °C. Avoid repeated freeze/thaw cycles.

Molecular Weight: Calculated MW: 30 kDa/35 kDa
Observed MW: 35 kDa

Swiss Prot: [P40926](#)

GeneID: [4191](#)

Gene Symbol: MDH2

Concentration: > 1 mg/ml

Buffer: PBS, pH 7.3, 0.02% sodium azide, 50% glycerol.

Note: This product is for research use only.