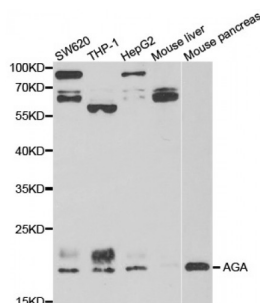


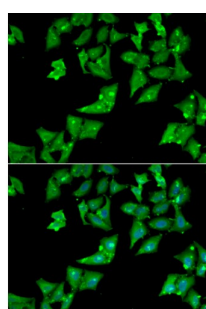
Abbexa Ltd, Innovation Centre, Cambridge Science Park, Cambridge, CB4 0EY, UK
Telephone: +44 (0) 1223 755950 - Fax: +44 (0) 1223 755951 - E-Mail: info@abbexa.com

Anti-Glycolipid Antibody (AGA) Antibody

Catalogue No.: abx004855



Western blot analysis of extracts of various cell lines, using AGA antibody (abx004855) at 1/1000 dilution.



Immunofluorescence analysis of HeLa cells using AGA antibody (abx004855). Blue: DAPI for nuclear staining.

AGA Antibody is a Rabbit Polyclonal antibody against AGA. Aspartylglucosaminidase is involved in the catabolism of N-linked oligosaccharides of glycoproteins. It cleaves asparagine from N-acetylglucosamines as one of the final steps in the lysosomal breakdown of glycoproteins. The lysosomal storage disease aspartylglucosaminuria is caused by a deficiency in the AGA enzyme. Alternatively spliced transcript variants have been identified.

Target: AGA

Reactivity: Human, Mouse

Host: Rabbit

Clonality: Polyclonal

Tested Applications: WB, IF/ICC

Recommended dilutions: WB: 1/500 - 1/2000, IF/ICC: 1/50 - 1/100. Optimal dilutions/concentrations should be determined by the end user.

Immunogen: Recombinant protein of human AGA.

Purification: Affinity purified.

Form: Liquid

Abbexa Ltd, Innovation Centre, Cambridge Science Park, Cambridge, CB4 0EY, UK
Telephone: +44 (0) 1223 755950 - Fax: +44 (0) 1223 755951 - E-Mail: info@abbexa.com

Isotype:	IgG
Conjugation:	Unconjugated
Storage:	Aliquot and store at -20 °C. Avoid repeated freeze/thaw cycles.
Molecular Weight:	Calculated MW: 37 kDa Observed MW: 18 kDa
Swiss Prot:	P20933
GeneID:	175
Gene Symbol:	AGA
Concentration:	> 1 mg/ml
Buffer:	PBS, pH 7.3, 0.02% sodium azide, 50% glycerol.
Note:	This product is for research use only.