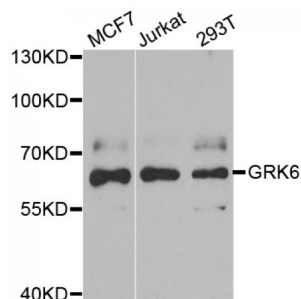


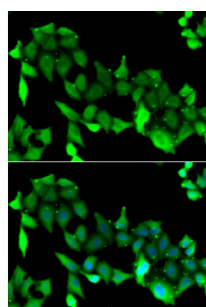
Abbexa Ltd, Innovation Centre, Cambridge Science Park, Cambridge, CB4 0EY, UK
Telephone: +44 (0) 1223 755950 - Fax: +44 (0) 1223 755951 - E-Mail: info@abbexa.com

G Protein-Coupled Receptor Kinase 6 (GRK6) Antibody

Catalogue No.: abx004877



Western blot analysis of extracts of various cell lines, using GRK6 antibody (abx004877) at 1/1000 dilution.



Immunofluorescence analysis of A549 cells using GRK6 antibody (abx004877). Blue: DAPI for nuclear staining.

GRK6 Antibody is a Rabbit Polyclonal antibody against GRK6. This gene encodes a member of the guanine nucleotide-binding protein (G protein)-coupled receptor kinase subfamily of the Ser/Thr protein kinase family. The protein phosphorylates the activated forms of G protein-coupled receptors thus initiating their deactivation. Several transcript variants encoding different isoforms have been described for this gene.

Target: GRK6

Reactivity: Human

Host: Rabbit

Clonality: Polyclonal

Tested Applications: WB, IF/ICC

Recommended dilutions: WB: 1/500 - 1/2000, IF/ICC: 1/10 - 1/100. Optimal dilutions/concentrations should be determined by the end user.

Immunogen: Recombinant protein of human GRK6.

Purification: Affinity purified.

Form: Liquid

Abbexa Ltd, Innovation Centre, Cambridge Science Park, Cambridge, CB4 0EY, UK
Telephone: +44 (0) 1223 755950 - Fax: +44 (0) 1223 755951 - E-Mail: info@abbexa.com

Isotype:	IgG
Conjugation:	Unconjugated
Storage:	Aliquot and store at -20 °C. Avoid repeated freeze/thaw cycles.
Molecular Weight:	Calculated MW: 64 kDa/65 kDa/67 kDa Observed MW: 65 kDa
Swiss Prot:	P43250
GeneID:	2870
Gene Symbol:	GRK6
Concentration:	> 1 mg/ml
Buffer:	PBS, pH 7.3, 0.02% sodium azide, 50% glycerol.
Note:	This product is for research use only.