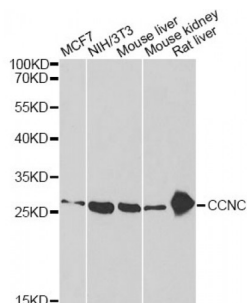


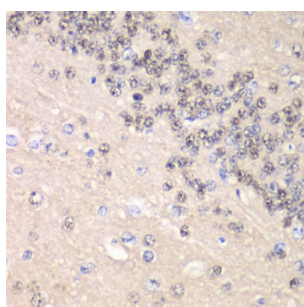
Abbexa Ltd, Innovation Centre, Cambridge Science Park, Cambridge, CB4 0EY, UK
Telephone: +44 (0) 1223 755950 - Fax: +44 (0) 1223 755951 - E-Mail: info@abbexa.com

Cyclin-C (CCNC) Antibody

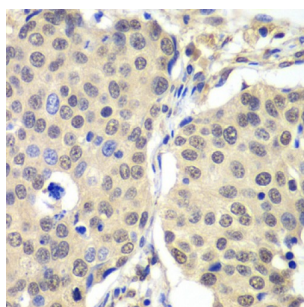
Catalogue No.: abx005023



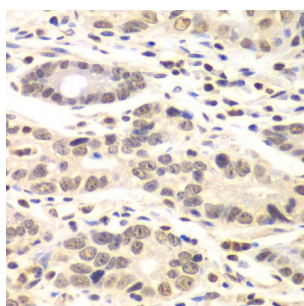
Western blot analysis of extracts of various cell lines, using CCNC antibody (abx005023) at 1/1000 dilution.



Immunohistochemistry of paraffin-embedded rat brain using CCNC antibody (abx005023) at dilution of 1/100 (40x lens).



Immunohistochemistry of paraffin-embedded human lung cancer using CCNC antibody (abx005023) at dilution of 1/100 (40x lens).



Immunohistochemistry of paraffin-embedded human colon carcinoma using CCNC antibody (abx005023) at dilution of 1/100 (40x lens).

CCNC Antibody is a Rabbit Polyclonal antibody against CCNC. The protein encoded by this gene is a member of the cyclin family of proteins. The encoded protein interacts with cyclin-dependent kinase 8 and induces the phosphorylation of the carboxy-terminal domain of the large subunit of RNA polymerase II. The level of mRNAs for this gene peaks in the G1 phase of the cell cycle. Two transcript variants encoding different isoforms have been found for this gene.

Target: CCNC

Abbexa Ltd, Innovation Centre, Cambridge Science Park, Cambridge, CB4 0EY, UK
Telephone: +44 (0) 1223 755950 - Fax: +44 (0) 1223 755951 - E-Mail: info@abbexa.com

Reactivity: Human, Mouse, Rat

Host: Rabbit

Clonality: Polyclonal

Tested Applications: WB, IHC, IF/ICC

Recommended dilutions: WB: 1/500 - 1/2000, IHC: 1/50 - 1/200, IF/ICC: 1/10 - 1/100. Optimal dilutions/concentrations should be determined by the end user.

Immunogen: Recombinant protein of human CCNC.

Purification: Affinity purified.

Form: Liquid

Isotype: IgG

Conjugation: Unconjugated

Storage: Aliquot and store at -20 °C. Avoid repeated freeze/thaw cycles.

Molecular Weight: Calculated MW: 22 kDa/33 kDa
Observed MW: 26 kDa

Swiss Prot: [P24863](#)

GeneID: [892](#)

Gene Symbol: CCNC

Concentration: > 1 mg/ml

Buffer: PBS, pH 7.3, 0.02% sodium azide, 50% glycerol.

Note: This product is for research use only.