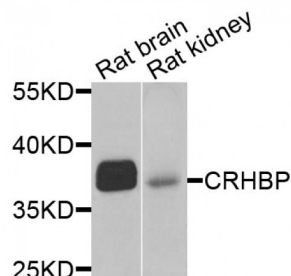


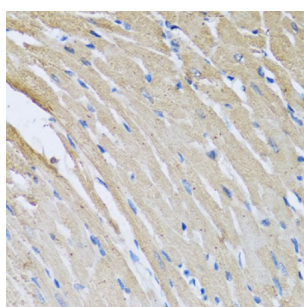
Abbexa Ltd, Innovation Centre, Cambridge Science Park, Cambridge, CB4 0EY, UK
Telephone: +44 (0) 1223 755950 - Fax: +44 (0) 1223 755951 - E-Mail: info@abbexa.com

Corticotropin Releasing Hormone Binding Protein (CRHBP) Antibody

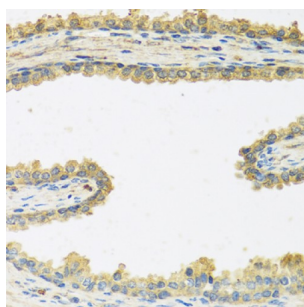
Catalogue No.: abx005040



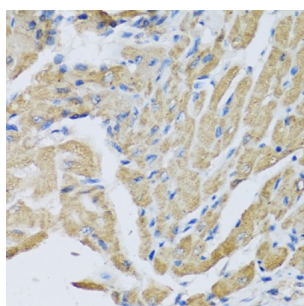
Western blot analysis of extracts of various cell lines, using CRHBP antibody (abx005040) at 1/1000 dilution.



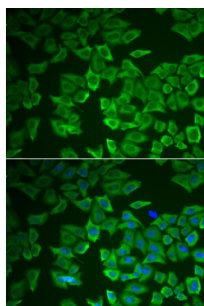
Immunohistochemistry of paraffin-embedded rat heart using CRHBP antibody (abx005040) at dilution of 1/100 (40x lens).



Immunohistochemistry of paraffin-embedded human prostate using CRHBP antibody (abx005040) at dilution of 1/100 (40x lens).



Immunohistochemistry of paraffin-embedded mouse heart using CRHBP antibody (abx005040) at dilution of 1/100 (40x lens).



Immunofluorescence analysis of HeLa cells using CRHBP antibody (abx005040). Blue: DAPI for nuclear staining.

CRHBP Antibody is a Rabbit Polyclonal antibody against CRHBP. Corticotropin-releasing hormone is a potent stimulator of

Abbexa Ltd, Innovation Centre, Cambridge Science Park, Cambridge, CB4 0EY, UK
Telephone: +44 (0) 1223 755950 - Fax: +44 (0) 1223 755951 - E-Mail: info@abbexa.com

synthesis and secretion of preopiomelanocortin-derived peptides. Although CRH concentrations in the human peripheral circulation are normally low, they increase throughout pregnancy and fall rapidly after parturition. Maternal plasma CRH probably originates from the placenta. Human plasma contains a CRH-binding protein which inactivates CRH and which may prevent inappropriate pituitary-adrenal stimulation in pregnancy.

Target: CRHBP

Reactivity: Human, Mouse, Rat

Host: Rabbit

Clonality: Polyclonal

Tested Applications: WB, IHC, IF/ICC

Recommended dilutions: WB: 1/500 - 1/2000, IHC: 1/50 - 1/100, IF/ICC: 1/50 - 1/100. Optimal dilutions/concentrations should be determined by the end user.

Immunogen: Recombinant protein of human CRHBP.

Purification: Affinity purified.

Form: Liquid

Isotype: IgG

Conjugation: Unconjugated

Storage: Aliquot and store at -20 °C. Avoid repeated freeze/thaw cycles.

Molecular Weight: Calculated MW: 36 kDa
Observed MW: 37 kDa

Swiss Prot: [P24387](#)

GeneID: [1393](#)

Gene Symbol: CRHBP

Concentration: > 1 mg/ml

Buffer: PBS, pH 7.3, 0.02% sodium azide, 50% glycerol.

Note: This product is for research use only.