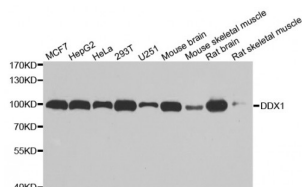


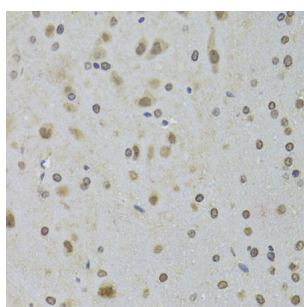
Abbexa Ltd, Innovation Centre, Cambridge Science Park, Cambridge, CB4 0EY, UK
Telephone: +44 (0) 1223 755950 - Fax: +44 (0) 1223 755951 - E-Mail: info@abbexa.com

ATP-Dependent RNA Helicase DDX1 (DDX1) Antibody

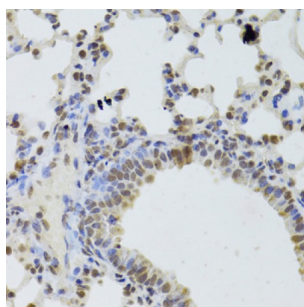
Catalogue No.: abx005045



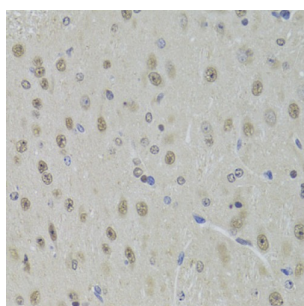
Western blot analysis of extracts of various cell lines, using DDX1 antibody (abx005045) at 1/1000 dilution.



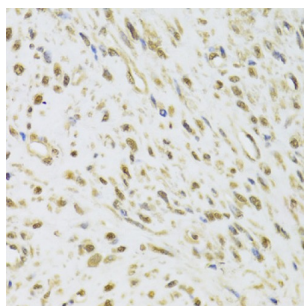
Immunohistochemistry of paraffin-embedded rat brain using DDX1 Antibody (abx005045) at dilution of 1/100 (40x lens).



Immunohistochemistry of paraffin-embedded mouse lung using DDX1 Antibody (abx005045) at dilution of 1/100 (40x lens).

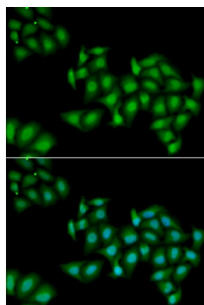


Immunohistochemistry of paraffin-embedded mouse brain using DDX1 Antibody (abx005045) at dilution of 1/100 (40x lens).

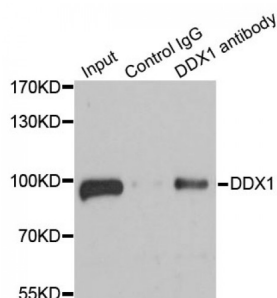


Immunohistochemistry of paraffin-embedded human leiomyoma of uterus using DDX1 Antibody (abx005045) at dilution of 1/100 (40x lens).

Abbexa Ltd, Innovation Centre, Cambridge Science Park, Cambridge, CB4 0EY, UK
Telephone: +44 (0) 1223 755950 - Fax: +44 (0) 1223 755951 - E-Mail: info@abbexa.com



Immunofluorescence analysis of HeLa cells using DDX1 antibody (abx005045). Blue: DAPI for nuclear staining.



Immunoprecipitation analysis of 100 µg extracts of 293T cells using 3 µg DDX1 antibody (abx005045). Western blot was performed from the immunoprecipitate using DDX1 antibody (abx005045) at a dilution of 1/1000.

DDX1 Antibody is a Rabbit Polyclonal antibody against DDX1. DEAD box proteins, characterized by the conserved motif Asp-Glu-Ala-Asp (DEAD), are putative RNA helicases. They are implicated in a number of cellular processes involving alteration of RNA secondary structure such as translation initiation, nuclear and mitochondrial splicing, and ribosome and spliceosome assembly. Based on their distribution patterns, some members of this family are believed to be involved in embryogenesis, spermatogenesis, and cellular growth and division. This gene encodes a DEAD box protein of unknown function. It shows high transcription levels in 2 retinoblastoma cell lines and in tissues of neuroectodermal origin.

Target: DDX1

Reactivity: Human, Mouse, Rat

Host: Rabbit

Clonality: Polyclonal

Tested Applications: WB, IHC, IF/ICC, IP

Recommended dilutions: WB: 1/500 - 1/2000, IHC: 1/50 - 1/200, IF/ICC: 1/10 - 1/100, IP: 1/20 - 1/50. Optimal dilutions/concentrations should be determined by the end user.

Immunogen: Recombinant protein of human DDX1.

Purification: Affinity purified.

Form: Liquid

Isotype: IgG

Abbexa Ltd, Innovation Centre, Cambridge Science Park, Cambridge, CB4 0EY, UK
Telephone: +44 (0) 1223 755950 - Fax: +44 (0) 1223 755951 - E-Mail: info@abbexa.com

Conjugation:	Unconjugated
Storage:	Aliquot and store at -20 °C. Avoid repeated freeze/thaw cycles.
Molecular Weight:	Calculated MW: 68 kDa/69 kDa/82 kDa Observed MW: 100 kDa
Swiss Prot:	Q92499
GeneID:	1653
Gene Symbol:	DDX1
Concentration:	> 1 mg/ml
Buffer:	PBS, pH 7.3, 0.02% sodium azide, 50% glycerol.
Note:	This product is for research use only.