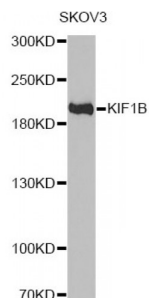


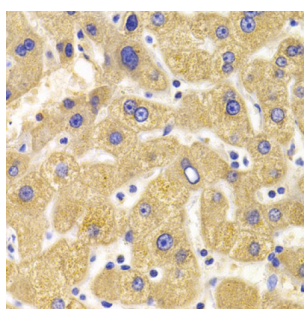
Abbexa Ltd, Innovation Centre, Cambridge Science Park, Cambridge, CB4 0EY, UK  
Telephone: +44 (0) 1223 755950 - Fax: +44 (0) 1223 755951 - E-Mail: info@abbexa.com

### Kinesin Family Member 1B (KIF1B) Antibody

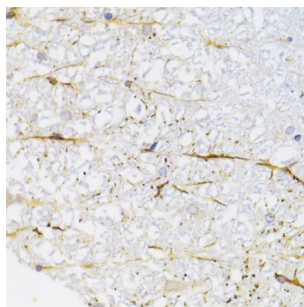
Catalogue No.: abx005089



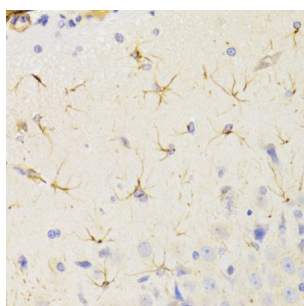
Western blot analysis of extracts of SKOV3 cells, using KIF1B antibody (abx005089) at 1/1000 dilution.



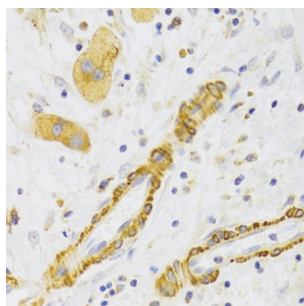
Immunohistochemistry of paraffin-embedded human liver injury using KIF1B Antibody (abx005089) at dilution of 1/100 (40x lens).



Immunohistochemistry of paraffin-embedded rat spinal cord using KIF1B Antibody (abx005089) at dilution of 1/100 (40x lens).

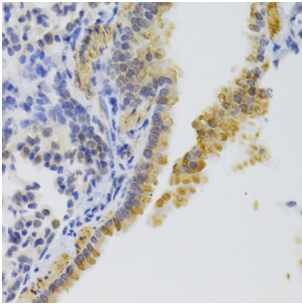


Immunohistochemistry of paraffin-embedded rat brain using KIF1B Antibody (abx005089) at dilution of 1/100 (40x lens).



Immunohistochemistry of paraffin-embedded human liver cancer using KIF1B Antibody (abx005089) at dilution of 1/100 (40x lens).

Abbexa Ltd, Innovation Centre, Cambridge Science Park, Cambridge, CB4 0EY, UK  
Telephone: +44 (0) 1223 755950 - Fax: +44 (0) 1223 755951 - E-Mail: [info@abbexa.com](mailto:info@abbexa.com)



Immunohistochemistry of paraffin-embedded mouse lung using KIF1B Antibody (abx005089) at dilution of 1/100 (40x lens).

KIF1B Antibody is a Rabbit Polyclonal antibody against KIF1B. This gene encodes a motor protein that transports mitochondria and synaptic vesicle precursors. Mutations in this gene cause Charcot-Marie-Tooth disease, type 2A1.

**Target:** KIF1B

**Reactivity:** Human, Mouse, Rat

**Host:** Rabbit

**Clonality:** Polyclonal

**Tested Applications:** WB, IHC

**Recommended dilutions:** WB: 1/500 - 1/2000, IHC: 1/50 - 1/200. Optimal dilutions/concentrations should be determined by the end user.

**Immunogen:** Recombinant protein of human KIF1B.

**Purification:** Affinity purified.

**Form:** Liquid

**Isotype:** IgG

**Conjugation:** Unconjugated

**Storage:** Aliquot and store at -20 °C. Avoid repeated freeze/thaw cycles.

**Molecular Weight:** Calculated MW: 130 kDa/199 kDa/204 kDa/205 kDa  
Observed MW: 204 kDa

**Swiss Prot:** [O60333](#)

**GeneID:** [23095](#)

**Gene Symbol:** KIF1B

Abbexa Ltd, Innovation Centre, Cambridge Science Park, Cambridge, CB4 0EY, UK  
Telephone: +44 (0) 1223 755950 - Fax: +44 (0) 1223 755951 - E-Mail: [info@abbexa.com](mailto:info@abbexa.com)

**Concentration:** > 1 mg/ml

**Buffer:** PBS, pH 7.3, 0.02% sodium azide, 50% glycerol.

**Note:** This product is for research use only.