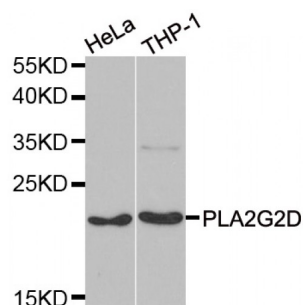


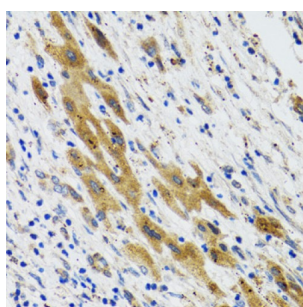
Abbexa Ltd, Innovation Centre, Cambridge Science Park, Cambridge, CB4 0EY, UK  
Telephone: +44 (0) 1223 755950 - Fax: +44 (0) 1223 755951 - E-Mail: [info@abbexa.com](mailto:info@abbexa.com)

## Phospholipase A2, Group II D (PLA2G2D) Antibody

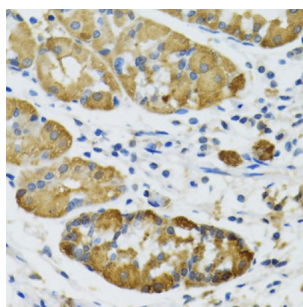
Catalogue No.: abx005130



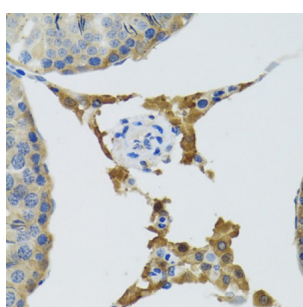
Western blot analysis of extracts of various cell lines, using PLA2G2D antibody (abx005130) at 1/1000 dilution.



Immunohistochemistry of paraffin-embedded human liver cancer using PLA2G2D antibody (abx005130) at dilution of 1/100 (40x lens).



Immunohistochemistry of paraffin-embedded human stomach using PLA2G2D antibody (abx005130) at dilution of 1/100 (40x lens).



Immunohistochemistry of paraffin-embedded mouse testis using PLA2G2D antibody (abx005130) at dilution of 1/100 (40x lens).

PLA2G2D Antibody is a Rabbit Polyclonal antibody against PLA2G2D. This gene encodes a secreted member of the phospholipase A2 family, and is found in a cluster of related family members on chromosome 1. Phospholipase A2 family members hydrolyze the sn-2 fatty acid ester bond of glycerophospholipids to produce lysophospholipids and free fatty acid. This gene may be involved in inflammation and immune response, and in weight loss associated with chronic obstructive pulmonary disease. Alternative splicing results in multiple transcript variants encoding different isoforms.

**Target:** PLA2G2D

Abbexa Ltd, Innovation Centre, Cambridge Science Park, Cambridge, CB4 0EY, UK  
Telephone: +44 (0) 1223 755950 - Fax: +44 (0) 1223 755951 - E-Mail: [info@abbexa.com](mailto:info@abbexa.com)

**Reactivity:** Human, Mouse, Rat

**Host:** Rabbit

**Clonality:** Polyclonal

**Tested Applications:** WB, IHC, IF/ICC

**Recommended dilutions:** WB: 1/500 - 1/2000, IHC: 1/50 - 1/200, IF/ICC: 1/10 - 1/100. Optimal dilutions/concentrations should be determined by the end user.

**Immunogen:** Recombinant protein of human PLA2G2D.

**Purification:** Affinity purified.

**Form:** Liquid

**Isotype:** IgG

**Conjugation:** Unconjugated

**Storage:** Aliquot and store at -20 °C. Avoid repeated freeze/thaw cycles.

**Molecular Weight:** Calculated MW: 16 kDa  
Observed MW: 20 kDa

**Swiss Prot:** [Q9UNK4](#)

**GeneID:** [26279](#)

**Gene Symbol:** PLA2G2D

**Concentration:** > 1 mg/ml

**Buffer:** PBS, pH 7.3, 0.02% sodium azide, 50% glycerol.

**Note:** This product is for research use only.