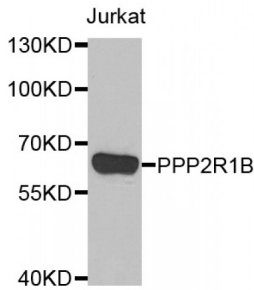


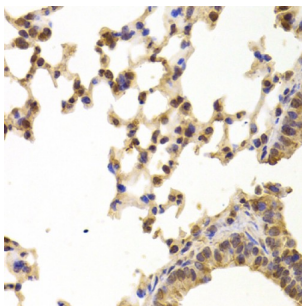
Abbexa Ltd, Innovation Centre, Cambridge Science Park, Cambridge, CB4 0EY, UK  
Telephone: +44 (0) 1223 755950 - Fax: +44 (0) 1223 755951 - E-Mail: info@abbexa.com

### Protein Phosphatase 2 Scaffold Subunit Abeta (PPP2R1B) Antibody

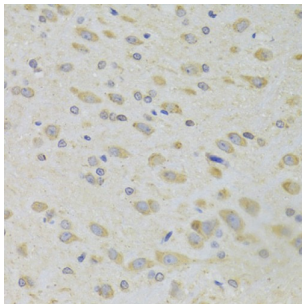
Catalogue No.: abx005142



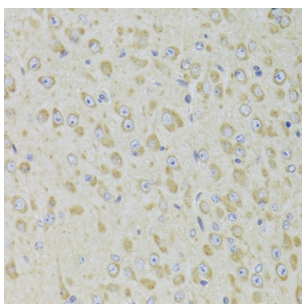
Western blot analysis of extracts of Jurkat cells, using PPP2R1B antibody (abx005142) at 1/1000 dilution.



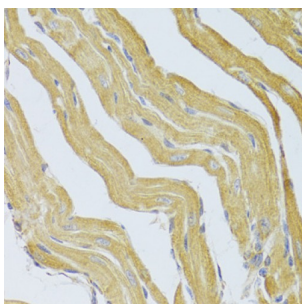
Immunohistochemistry of paraffin-embedded mouse lung using PPP2R1B Antibody (abx005142) at dilution of 1/100 (40x lens).



Immunohistochemistry of paraffin-embedded rat brain using PPP2R1B Antibody (abx005142) at dilution of 1/100 (40x lens).



Immunohistochemistry of paraffin-embedded mouse brain using PPP2R1B Antibody (abx005142) at dilution of 1/100 (40x lens).



Immunohistochemistry of paraffin-embedded mouse heart using PPP2R1B Antibody (abx005142) at dilution of 1/100 (40x lens).

PPP2R1B Antibody is a Rabbit Polyclonal antibody against PPP2R1B. This gene encodes a constant regulatory subunit of

Abbexa Ltd, Innovation Centre, Cambridge Science Park, Cambridge, CB4 0EY, UK  
Telephone: +44 (0) 1223 755950 - Fax: +44 (0) 1223 755951 - E-Mail: info@abbexa.com

protein phosphatase 2. Protein phosphatase 2 is one of the four major Ser/Thr phosphatases, and it is implicated in the negative control of cell growth and division. It consists of a common heteromeric core enzyme, which is composed of a catalytic subunit and a constant regulatory subunit, that associates with a variety of regulatory subunits. The constant regulatory subunit A serves as a scaffolding molecule to coordinate the assembly of the catalytic subunit and a variable regulatory B subunit. This gene encodes a beta isoform of the constant regulatory subunit A. Mutations in this gene have been associated with some lung and colon cancers. Alternatively spliced transcript variants have been described.

<b>Target:</b>	PPP2R1B
<b>Reactivity:</b>	Human, Mouse, Rat
<b>Host:</b>	Rabbit
<b>Clonality:</b>	Polyclonal
<b>Tested Applications:</b>	WB, IHC, IF/ICC
<b>Recommended dilutions:</b>	WB: 1/500 - 1/2000, IHC: 1/50 - 1/200, IF/ICC: 1/50 - 1/100. Optimal dilutions/concentrations should be determined by the end user.
<b>Immunogen:</b>	Recombinant protein of human PPP2R1B.
<b>Purification:</b>	Affinity purified.
<b>Form:</b>	Liquid
<b>Isotype:</b>	IgG
<b>Conjugation:</b>	Unconjugated
<b>Storage:</b>	Aliquot and store at -20 °C. Avoid repeated freeze/thaw cycles.
<b>Molecular Weight:</b>	Calculated MW: 52 kDa/61 kDa/66 kDa/73 kDa Observed MW: 65 kDa
<b>Swiss Prot:</b>	<a href="#">P30154</a>
<b>GeneID:</b>	<a href="#">5519</a>
<b>Gene Symbol:</b>	PPP2R1B
<b>Concentration:</b>	3.33 mg/ml
<b>Buffer:</b>	PBS, pH 7.3, 0.02% sodium azide, 50% glycerol.
<b>Note:</b>	This product is for research use only.