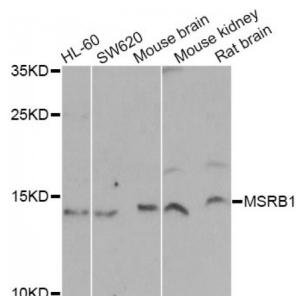


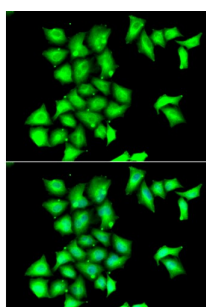
Abbexa Ltd, Innovation Centre, Cambridge Science Park, Cambridge, CB4 0EY, UK
Telephone: +44 (0) 1223 755950 - Fax: +44 (0) 1223 755951 - E-Mail: info@abbexa.com

Methionine-R-Sulfoxide Reductase B1 (MSRB1) Antibody

Catalogue No.: abx005168



Western blot analysis of extracts of various cell lines, using MSRB1 Antibody (abx005168) at 1/1000 dilution.



Immunofluorescence analysis of HeLa cells using MSRB1 antibody (abx005168). Blue: DAPI for nuclear staining.

MSRB1 Antibody is a Rabbit Polyclonal antibody against MSRB1. This gene encodes a selenoprotein, which contains a selenocysteine (Sec) residue at its active site. The selenocysteine is encoded by the UGA codon that normally signals translation termination. The 3' UTR of selenoprotein genes have a common stem-loop structure, the sec insertion sequence (SECIS), that is necessary for the recognition of UGA as a Sec codon rather than as a stop signal. This protein belongs to the methionine sulfoxide reductase (Msr) protein family which includes repair enzymes that reduce oxidized methionine residues in proteins. The protein encoded by this gene is expressed in a variety of adult and fetal tissues and localizes to the cell nucleus and cytosol.

Target: MSRB1

Reactivity: Human, Mouse, Rat

Host: Rabbit

Clonality: Polyclonal

Tested Applications: WB, IF/ICC

Recommended dilutions: WB: 1/500 - 1/2000, IF/ICC: 1/50 - 1/100. Optimal dilutions/concentrations should be determined by the end user.

Immunogen: Recombinant protein of human MSRB1.

Purification: Affinity purified.

Abbexa Ltd, Innovation Centre, Cambridge Science Park, Cambridge, CB4 0EY, UK
Telephone: +44 (0) 1223 755950 - Fax: +44 (0) 1223 755951 - E-Mail: info@abbexa.com

Form:	Liquid
Isotype:	IgG
Conjugation:	Unconjugated
Storage:	Aliquot and store at -20 °C. Avoid repeated freeze/thaw cycles.
Molecular Weight:	Calculated MW: 12 kDa Observed MW: 13 kDa
Swiss Prot:	Q9NZV6
GeneID:	51734
Gene Symbol:	MSRB1
Concentration:	> 1 mg/ml
Buffer:	PBS, pH 7.3, 0.02% sodium azide, 50% glycerol.
Note:	This product is for research use only.