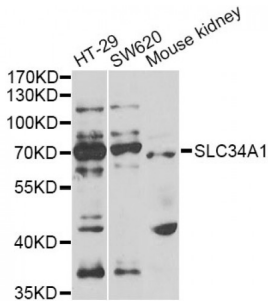
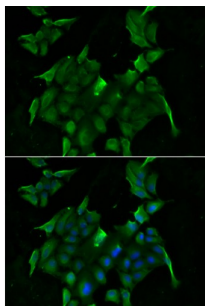


SLC34A1 Antibody

Catalogue No.: abx005172



Western blot analysis of extracts of various cell lines, using SLC34A1 antibody (abx005172) at 1/1000 dilution.



Immunofluorescence analysis of HeLa cells using SLC34A1 antibody (abx005172). Blue: DAPI for nuclear staining.

SLC34A1 Antibody is a Rabbit Polyclonal antibody against SLC34A1. This gene encodes a member of the type II sodium-phosphate cotransporter family. Mutations in this gene are associated with hypophosphatemia nephrolithiasis/osteoporosis 1. Alternative splicing results in multiple transcript variants.

Target: SLC34A1

Reactivity: Human, Mouse, Rat

Host: Rabbit

Clonality: Polyclonal

Tested Applications: WB, IF/ICC

Recommended dilutions: WB: 1/500 - 1/2000, IF/ICC: 1/10 - 1/100. Optimal dilutions/concentrations should be determined by the end user.

Immunogen: Recombinant protein of human SLC34A1.

Purification: Affinity purified.

Form: Liquid

Isotype: IgG

Abbexa Ltd, Innovation Centre, Cambridge Science Park, Cambridge, CB4 0EY, UK
Telephone: +44 (0) 1223 755950 - Fax: +44 (0) 1223 755951 - E-Mail: info@abbexa.com

Conjugation:	Unconjugated
Storage:	Aliquot and store at -20 °C. Avoid repeated freeze/thaw cycles.
Molecular Weight:	Calculated MW: 36 kDa/68 kDa Observed MW: 70 kDa
Swiss Prot:	Q06495
GeneID:	6569
Gene Symbol:	SLC34A1
Concentration:	> 1 mg/ml
Buffer:	PBS, pH 7.3, 0.02% sodium azide, 50% glycerol.
Note:	This product is for research use only.